



Firmware Upgrade for PFP1180DUO

Author: **Jakub Babic**

Document ID#:

Revision: **r01**

Release date: **21.04.2016**

1 Procedure

1.1 Install driver

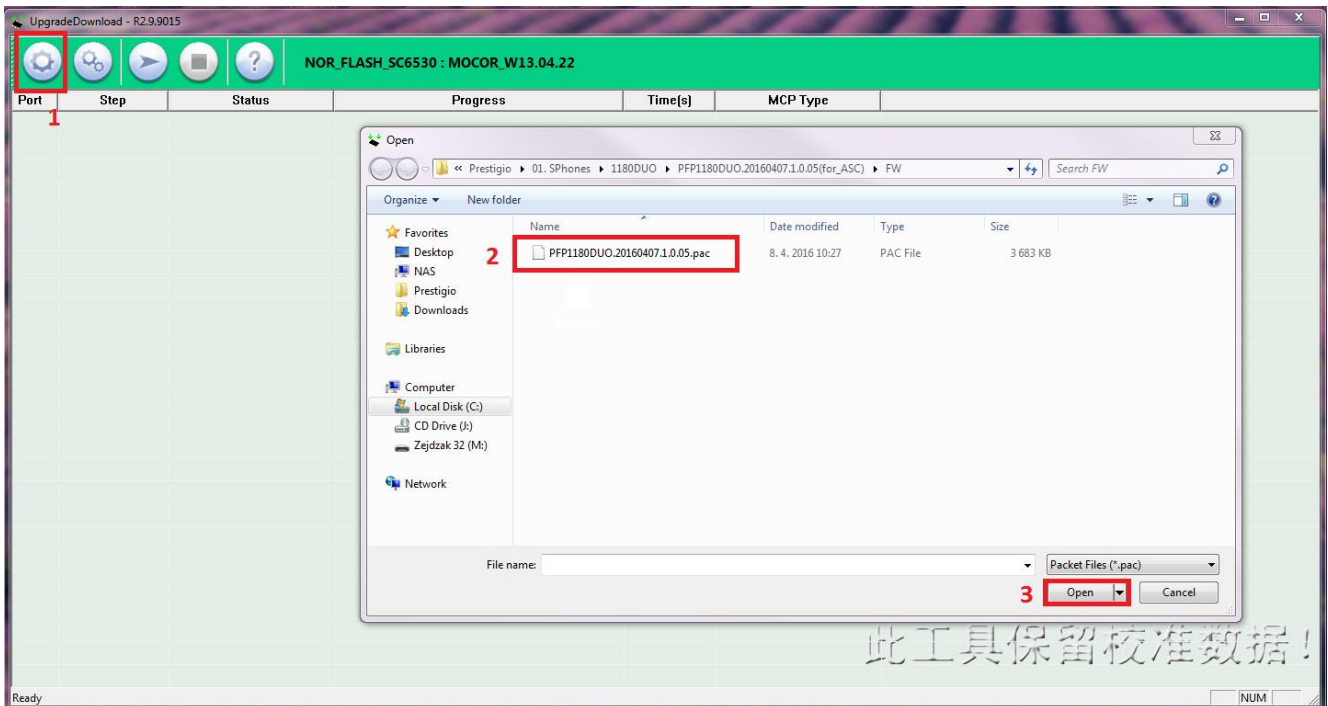
Install drivers from folder **Driver** **DriverCoding-MUX-1.0.0.48.rar.**

1.2 Install Firmware

1. Open upgrade tool in UPGRADEDOWNLOAD_R2.9.9015\Bin\UpgradeDownload.exe

ImageFiles	15. 9. 2015 15:57	File folder	
BMAConfig.xml	2. 4. 2013 14:19	XML File	12 KB
BMAFrame9.dll	9. 3. 2015 14:57	Application extens...	306 KB
BMError.ini	9. 3. 2015 14:57	Configuration sett...	1 KB
BMFileType.ini	9. 3. 2015 14:57	Configuration sett...	5 KB
BMPlatform9.dll	9. 3. 2015 14:57	Application extens...	271 KB
BMTimeout.ini	9. 3. 2015 14:57	Configuration sett...	1 KB
Guide.chm	1. 5. 2014 17:49	Compiled HTML ...	785 KB
Channel.ini	14. 11. 2013 18:41	Configuration sett...	2 KB
Channel9.dll	12. 3. 2015 18:55	Application extens...	247 KB
MCPTType.ini	13. 9. 2012 23:34	Configuration sett...	3 KB
ProcessFlow.dll	7. 1. 2015 19:16	Application extens...	192 KB
ProcessFlowSetting.ini	7. 1. 2015 19:16	Configuration sett...	1 KB
udl_bkmark.bmp	13. 9. 2012 23:34	Bitmap image	118 KB
UpgradeDownload.exe	12. 3. 2015 18:55	Application	1 643 KB
UpgradeDownload.ini	15. 9. 2015 15:29	Configuration sett...	7 KB

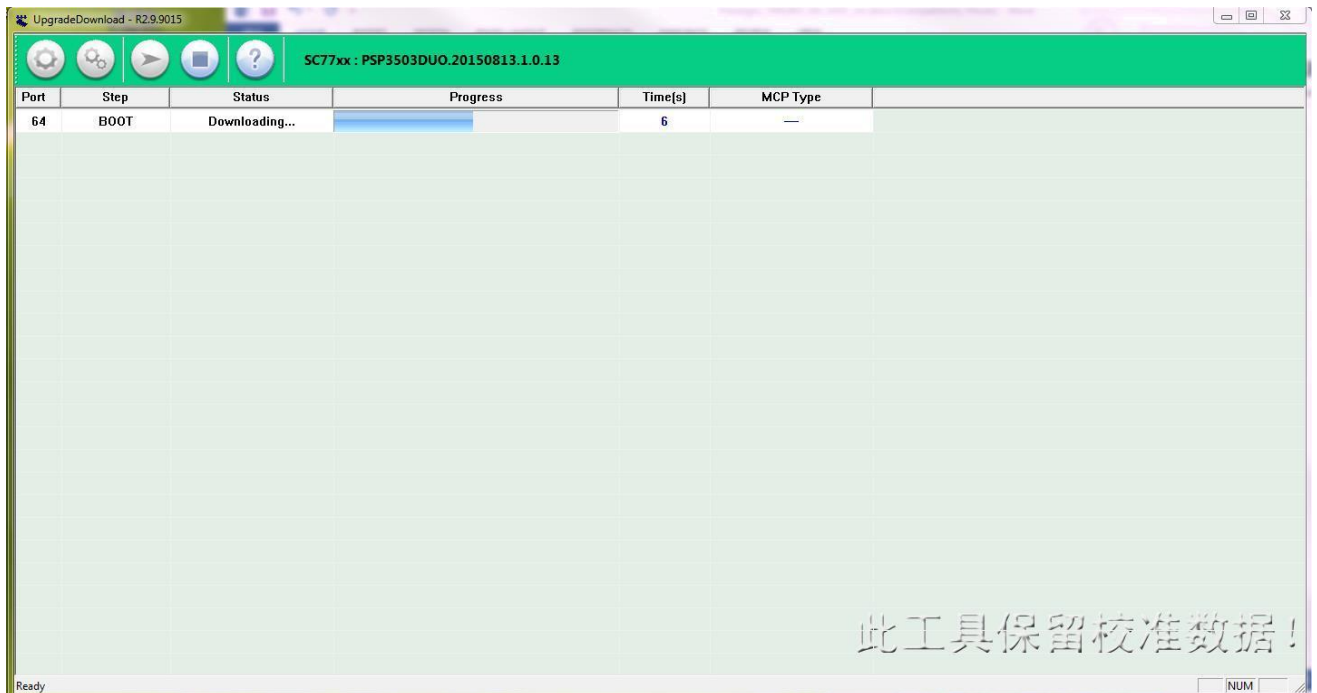
2. Load current firmware from FW folder .



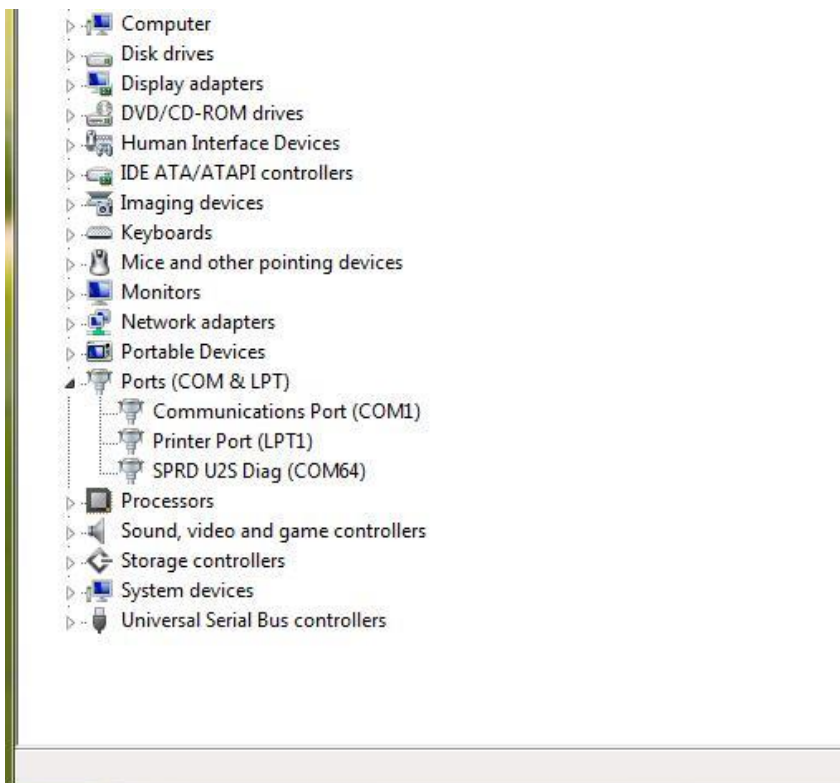
3. Press Start.



4. Remove the battery from device. **HOLD the number 2 button, connect cable from the computer, plug in battery.** The device is loaded automatically



5. Driver is opened.



6. Firmware has been installed successfully. The device can be unplugged. Press STOP button when you want to close application.

