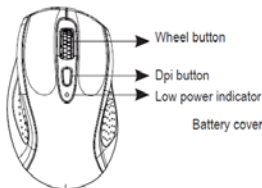


Package Contents

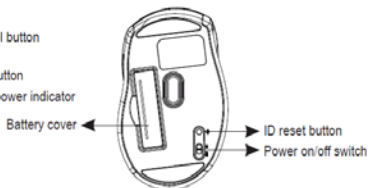
- | | |
|------------------------------|-----------------------------|
| 1. Prestigio Mouse Main Unit | 3. Warranty Card |
| 2. Quick Guide | 4. AAA Alkaline Battery X 2 |

Product Overviews

Top View



Button View



Getting Started

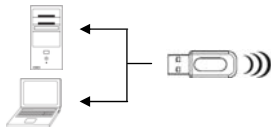


- Remove battery cabinet cover at the button of device.
- Insert batteries as indicated on the diagram attached.
- Fit in battery cabinet cover.
- Slide power switch to ON position.

NOTE:

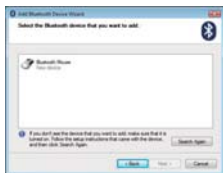
Low power LED blinks for 3 seconds if the device is powered on.

- Turn on PC or notebook.
- Insert Bluetooth Dongle (not included) into PC or notebook if necessary.
- Push ID reset button at the bottom of the device to start Bluetooth pairing process.

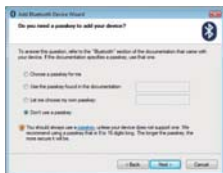




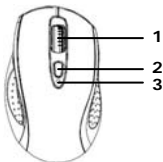
- Click on **Bluetooth Icon** to launch Bluetooth Control panel.
- Click on **Add** button to add new Bluetooth device.
- Check on **My device is set up and ready to be found** option and click on **Next** button to start wizard.



- Select **Bluetooth Mouse** figure and click on **Next** button to continue.
- Click on **Search Again** button and push ID reset button at the bottom of the device if no such option is displayed.



- Check on **Don't use a passkey** option and click on Next button to start pairing.
- Upon successful pairing, click on **Finish** button to complete process.



1. Press DPI switch to toggle between DPI 800/1600 modes.
2. Slide scrolling wheel to fast-scroll between pages.
3. The Low power indicator will be illuminated in red if batteries are in need to replacement.

NOTE:

The device automatically enters sleep mode when not used. Click any button to recall normal function.

Cautions



- Do not direct the laser beam at eyes at all times.
- Do not attempt to disassemble or alter any part of the device that is not described in this guide.
- Do not place the device in contact with water or any other liquids. The device is NOT designed to be liquid proof of any sort.
- In the event of liquid entry into interior of device, immediately disconnect the device from the computer. Continuing use of the device may result in fire or electrical shock. Please consult your product distributor or the closest support center.
- To avoid risk of electrical shock, do not connect or disconnect the device with wet hands.
- Do not place the device near a heat source or directly expose it to flame or heat.

Technical Specifications

Model Name	PJ-MSL2BR
Lens	Laser Lens
Light Source	Laser Diode with Built-In Sensor
Resolution	800/1600 DPI Switchable
Report Rate	100 cycle/second
Connection Type	Bluetooth Class 2 2.4GHz Technology
Transmission Distance	6~8M
Sensitivity	~ -85dbm
Channel/ID	79 Channels
OS Supported	Windows XP(32bit)/Vista
Power Source	Alkaline Battery AAA X 2
Power Consumption	<ul style="list-style-type: none"> ● Operation Mode : < 13 mA ● Sleep Mode 1: 1.5 mA ● Sleep Mode 2 :0.5 mA
Weight	100g
Dimensions (mm)	109(L) X 66.0(W) X 38.5(H)

Technical Support and Warranty Information

Please refer to www.prestigio.com for technical support and included warranty card for warranty information.

Disclaimer

We make every effort to ensure that the information and procedures in this user manual are accurate and complete. No liability can and will be accepted for any errors or omissions. Prestigio reserves the right to make any changes without further notice to any products herein.