

# U.S.FEDERAL COMMUNICATIONS COMMISSION RADIO FREQUENCY INTERFERENCE STATEMENT

## INFORMATION TO THE USER

ENG

**NOTE:** This equipment has been tested and found to comply with the limits for a Class B digital device pursuant to Part 15 of the FCC Rules.

These limits are designed to provide reasonable protection against harmful interference in a residential installation. This equipment generates, uses, and can radiate radio frequency energy and, if not installed and used in accordance with the instructions, may cause harmful interference to radio communications.

However, there is no guarantee that interference will not occur in a particular installation.

If this equipment does cause harmful interference to radio or television reception, which can be determined by turning the equipment off and on, the user is encouraged to try to correct the interference by one or more of the following measures:

- Reorient or relocate the receiving antenna.
- Increase the separation between the equipment and receiver.
- Connect the equipment into an outlet of a circuit different from that to which the receiver is connected.
- Consult the dealer or an experienced radio/TV technician for assistance.
- Changes or modification not expressly approved by the party responsible for compliance could void the user's authority to operate the equipment.
- Connecting of peripherals requires the use of grounded shielded signal cables.

## Introduction

This manual contains instructions for installing and operating Prestigio P575/P595 LCD TFT Monitor. 17" / 19" LCD Monitor is a highly ergonomic color display unit.

- 17" viewable SXGA LCD / 19" viewable SXGA LCD
- High quality screen re-scaling capability
- 12V DC input voltage
- VESA DPMS (Display Power Management Signaling)
- VESA DDC1/2B compatibility
- Advanced digital On-Screen-Display controls
- Fast and accurate auto adjustment
- Most advanced image scaling

## Safety Information

This Monitor has been engineered and manufactured to assure your safety. You can prevent serious electrical shock and other hazards by keeping in mind the following:

- Do not place anything wet on the monitor or the power cord. Never cover the ventilation openings with any material and never touch them with metallic or inflammable materials.

- Avoid operating the monitor in extreme heat, humidity or areas affected by dust.
- Temperature : 5~50°C, humidity : 30~80RH
- Be sure to turn the monitor off before plugging the power cord into the socket. Make sure that the power cord and the other cords are securely and rightly connected.
- Overloaded AC outlets and extension cords are dangerous, as are frayed power cords and broken plugs, which may cause electric shock or fire. Call your service technician for replacement.
- Do not use sharp tools such as a pin or a pencil near the monitor, as they may scratch the LCD surface.
- Do not use a solvent, such as benzene, to clean the monitor, as it will damage the LCD surface.

## Cleaning and Maintenance

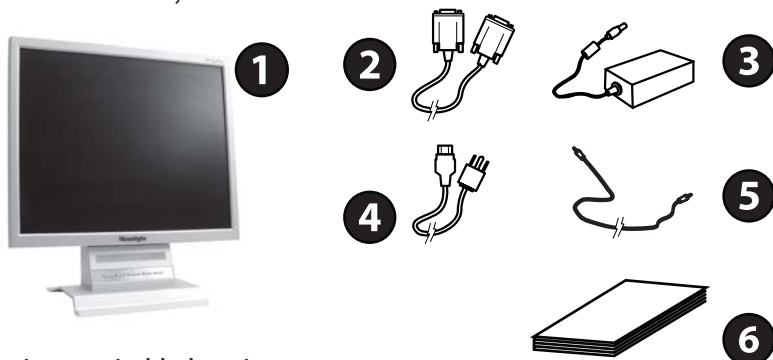
- To avoid risk of electric shock, do not disassemble the display unit cabinet. The unit is not user-serviceable. Remember to unplug the display unit from the power outlet before cleaning.
- Do not use alcohol (methyl, ethyl or isopropyl) or any strong dissolvent. Do not use thinner or benzene, abrasive cleaners or compressed air.
- Do not wipe the screen with a cloth or sponge that could scratch the surface.
- To clean your antistatic screen, use water and a special microfiber screen cleaning tissue used in optical lens cleaning, or lightly dampen a soft, clean cloth with water or a mild detergent.
- If the instructions above do not help in removing stains, contact an authorized service agent.

## Installing the monitor

### Packing List

The following items should be found in the packaging.

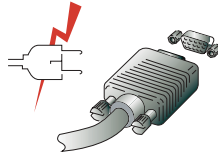
1. LCD Monitor
2. Signal Cable
3. AC / DC Adapter External Universal (DC 12V / 4.16A) (AC 100-240V / 1.7A)
4. Power Cord
5. Audio Cable
6. User's Guide + Warranty Card



### Selecting a suitable location

- Place the monitor at least 30cm from other electrical or heat-emitting equipment and allow at least 10cm on each side for ventilation.
- Place the monitor in a position where no light shines directly onto or is reflected on the screen.

- To reduce eye strain, avoid installing the display unit against a bright background such as a window.
- Position the monitor so that the top of the screen is no higher than eye level.
- Position the monitor directly in front of you at a comfortable reading distance (around 45 to 90cm).



Before you start cabling your monitor, check that the power is off on all units.  
To avoid any possibility of electric shock, always connect your equipment to properly earthed outlets.

## Connecting the monitor

1. Insert the 15-pin signal cable connector into the 15-pin VGA connection on your computer and on the monitor and screw it down.
2. Plug adapter output cable to the jack at the rear of LCD monitor and the power cord to the adapter.
3. Connect the power cord to power source.
4. Turn on the computer and the monitor.
5. Turn on the power to the computer. The picture will appear within about 10 seconds. Adjust the picture to obtain optimum picture quality. See section Adjusting the picture in this guide for more information.

## Audio system

This monitor has an audio system including two micro loudspeakers. Each of two micro loudspeakers has 2 Watts output power.



## Setting the refresh rate

Follow the instructions below to set your refresh rate in Windows 98/ME/XP/2000.

1. Go to the configuration window (Start-Settings-Configuration window).
2. Double click on the 'Display' icon.
3. Click on the 'Settings' tab.
4. Click on the 'Advanced' button.
5. Click on 'Adapter' and select 60Hz from the list.
6. Click on 'Apply' to accept the selected value.

## Preset Timing Table

If the signal from the system isn't equal to the preset timing mode, adjust the mode with reference to the user guide of videocard because the screen may not be displayed.

The recommended setting is a resolution of 1280 x 1024 and a refresh rate of 60Hz.

| No. | Horizontal Frequency | Refresh Rate | Resolution  |
|-----|----------------------|--------------|-------------|
| 1   | 31.5 KHz             | 70 Hz        | 720 x 400   |
| 2   | 31.5 KHz             | 60 Hz        | 640 x 480   |
| 3   | 37.5 KHz             | 75 Hz        | 640 x 480   |
| 4   | 37.9 KHz             | 60 Hz        | 800 x 600   |
| 5   | 46.9 KHz             | 75 Hz        | 800 x 600   |
| 6   | 48.4 KHz             | 60 Hz        | 1024 x 768  |
| 7   | 56.5 KHz             | 70 Hz        | 1024 x 768  |
| 8   | 60.0 KHz             | 75 Hz        | 1024 x 768  |
| 9   | 63.9 KHz             | 60 Hz        | 1280 x 1024 |
| 10  | 80.0 KHz             | 75 Hz        | 1280 x 1024 |

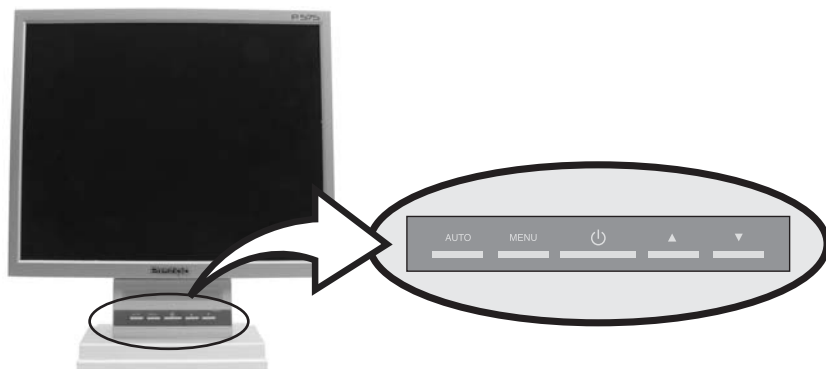
## User's Environment

Recommended Ergonomic User's Environment

- Viewing angle of the monitor should be between 0~20 degree.

## Adjusting the picture

You can adjust the screen display by using the buttons located below the screen.



## Using the On Screen Display

1. Push the MENU button to call the OSD to the screen. The resolution and frequency are displayed at the bottom of the menu box for your information.
2. Push the  $\wedge$  or  $\vee$  button to choose the item you want to adjust. The selected item is highlighted.
3. Push the MENU button to enter the highlighted item.
4. Use  $\vee$  or  $\wedge$  to choose the subitem.
5. Push Menu to adjust the highlighted subitem.
6. Use the  $\wedge$  or  $\vee$  button to adjust the selection.
7. The display unit automatically saves the new settings in 1 second after your last adjustments and the menu disappears. You can also push the EXIT button to make the menu disappear.

## Direct access button

### AUTO

At first display a full screen such as Window's back ground. Push the button AUTO to adjust the shape of screen automatically. Push the button MENU to confirm adjustment results.

## OSD Control Function List

### Input for PC

Press "+" or "-" to locate the item you desire to change, then press "Menu" to make the adjustment, then press "Menu" again to go back main menu.

### Brightness:

Press "+" or "-" to adjust the brightness.

### Contrast:

Press "+" or "-" to adjusts the difference between the light and dark areas.

### Clock:

Adjusts the video distortion. It will appear horizontal noise on the screen while adjust the Clock.

### Phase:

Adjusts the video distortion. It will appear vertical noise on the screen while adjust the Phase.

### Horizontal Position:

Moves the display picture left or right.

### Vertical Position:

Moves the display picture up or down.

### Auto Adjust:

Automatically adjusts H-Position, V-Position, Pixel Clock and Phase for an optimal image.

### OSD Language:

Change the OSD language, and press "Menu" to executing.

**OSD H-Position:**

Adjusts the OSD position. Press "+" to right, press "-" to left.

**OSD V-Position:**

Adjusts the OSD position. Press "+" to up, press "-" to down.

**OSD Transparence:**

Adjust the OSD transparency.

**Switch Color:**

Adjusts color temperature. Press "+" or "-" to select a color mode.

**Set Color USER:**

Adjust color temperature for User mode.

**Reset:**

Restore the default value (factory mode). Press "Menu" to executing.

**Exit:**

Exit the OSD menu and save the values. Press "Menu" to executing.

**Volume:**

Press "+" or "-" to adjust the volume setting.

**Input Source:**

Press "+" or "-" to select input source (VGA or DVI) and press "Menu" to executing.

**Color:**

Press "+" or "-" to adjust between colorful and colorless.

**Tint:**

Press "+" or "-" to adjust color varying.

**Memory Recall:**

Restore the default value (factory mode). Press "Menu" to executing.

**Sharpness:**

Press "+" or "-" to adjust the sharpness.

**Sharpness:**

Adjust the sharpness (available in scaling-up mode).

**Text Mode:**

Zoom ratio change between VGA and Text mode Press "Menu" to executing.

**Input for PC:**

Press "+" or "-" to locate the item you desire to change, then press "Menu" to make the adjustment, then press "Menu" again to go back main menu.

**Display power management****Reducing power consumption**

If the power management function of your computer is enabled, your monitor turns on and off automatically. You can control power management features from your computer.

Your computer may have power management features which enable the computer or monitor to enter a power saving mode when the system is idle. You can reactivate the system by pressing any key or moving the mouse.

| Mode      | LED             | Power consumption |
|-----------|-----------------|-------------------|
| Normal    | Green           | 40 W (Typ)        |
| Off       | Red             | < 5 W (Typ)       |
| Unplugged | Not illuminated | 0 W               |

The power button does not disconnect the monitor from the mains.  
The only way to isolate the monitor completely from the mains supply is to unplug the mains cable.

## Troubleshooting

If your monitor is not functioning properly, you may be able to solve the problem by following the suggestions below:

| Problem  | Possible solution  |
|--|--|
| Blank screen                                     | <p>If the power LED is not lit, push the Soft power switch or check the AC cord to turn the monitor on. If the display unit is powered through the computer, check that the computer is switched on.</p> <p>The PC might be in standby mode. Push one of the keyboard keys. Check that the keyboard is properly connected to the computer.</p> <p>Check that the signal cable connector is properly connected and that the connection pins are not bent or damaged. If the connector is loose, tighten the connector's screws.</p> |
| Error message:<br>Video mode not supported       | Check that the power cable is correctly connected to the display unit and to the power outlet.   |
| The display does not enter power management mode | Check the resolution and the frequency on the video port of your computer. Compare these values with the data in the Preset Timing Table.  |
| Color defects                                    | The video signal from the computer does not comply with VESA DPMS standard. Either the computer or the graphics adapter is not using the VESA DPMS power management function.  |
| Size, position, shape or quality unsatisfactory  | Check that the signal cable connector is properly connected and that the connection pins are not bent or damaged. Try another color temperature.   |
| Duplicated images                                | Adjust the picture characteristics as described in the section OSD Adjustment.   |
| Image is not stable                              | <p>A problem with your graphics adapter or display unit. Contact your service representative.</p> <p>Check that the display resolution and frequency from your PC or graphic adapter is an available mode for your monitor. In your PC, you can check through Control panel, Display, Settings.</p> <p>If the setting is not correct, use your computer utility program to change the display settings.</p>  |
| Message : No signal                              | <p>Check that the signal cable connector is properly connected and that the connection pins are not bent or damaged.</p> <p>If the connector is loose, tighten the connector's screws. Check that the computer is switched on.</p> <p>To enter a power saving mode. You can reactivate the system by pressing any key or moving the mouse.</p>   |
| The power LED is a red color                     | <p>LED Indicator can be orange color on changing of video mode or Input Signal (D-sub/DVI).</p> <p>Check the Resolution and the frequency on the video part of your computer. Compare these values with the data in the Preset Timing Table.</p>   |

## Contacting service

If the above troubleshooting hints do not help you find a solution to the problem, contact an authorized service agent.

If the monitor is sent for service, use the original package if possible.

Unplug the display unit from the power outlet and contact a service agent when:

- The monitor does not operate normally according to the operating instructions.
- The monitor exhibits a distinct change in performance.
- The monitor has been dropped or the cabinet has been damaged.
- The monitor has been exposed to rain, or water or liquid has been spilled onto the monitor.

## Specifications

### LCD

17"viewable TFT LCD

19"viewable TFT LCD

### Brightness

300 cd/m<sup>2</sup>

### Response Time

8 ms / 12 ms

### Contrast Ratio

500:1 (700:1 for models with Samsung panel)

### Input signals

R.G.B Analog, 15 pin D-sub, DVI

### Frequency rate

Horizontal: 30.0 to 80.0 KHz,

Vertical: 55 to 75Hz

### Maximum bandwidth

135 MHz

### Maximum resolution

1280 x 1024@75Hz

### Recommended resolution

1280 x 1024@60Hz,

### Input voltage

12 V DC, 4.16A

### Power consumption

<40W

### Power management

VESA DPMS

### Plug & Play

VESA DDS 1/2B

### OSD menu

BRIGHTNESS / CONTRAST, COLOR CONTROL, CLOCK / PHASE,

OSD CONTROL

### Audio system

2ch x 2 Watts

### Ergonomics

TCO, FCC Class B, CE,

### Safety and EMC

MPR-II, GOST R 50949-2001

### Operating Temperature

5~50°

### Weight

4.2 Kg unpacked, 5.1 Kg packed

### Dimensions (W x H x D)

375 x 370 x 170 mm

- Specification is subject to change without notice for performance improvement.