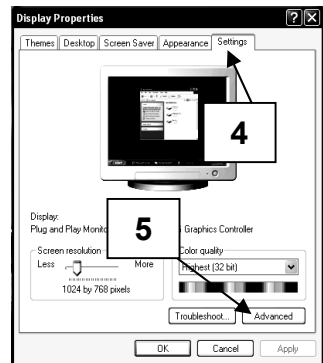
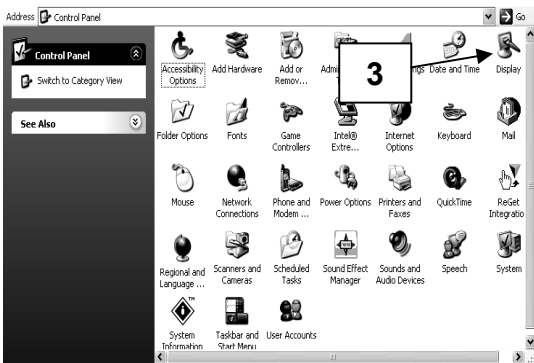
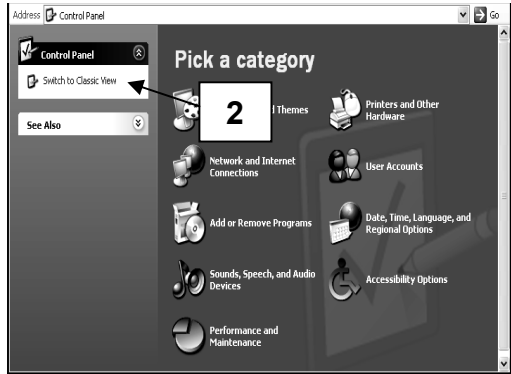
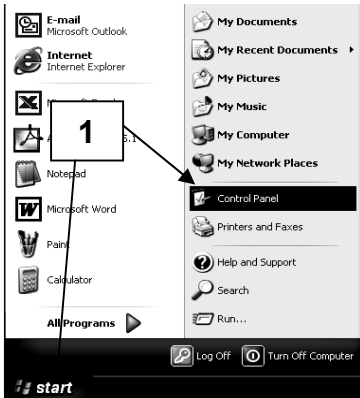
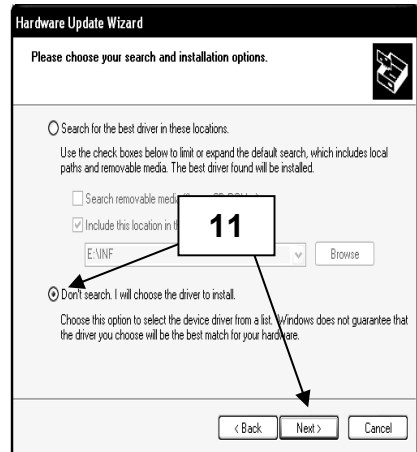
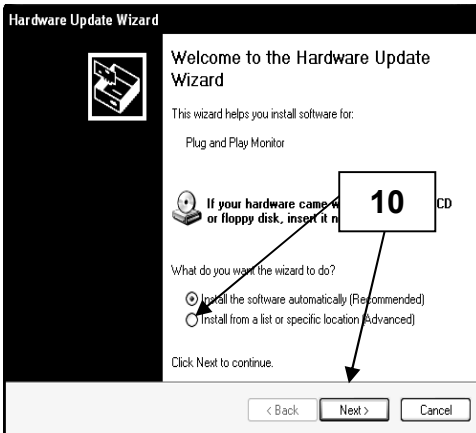
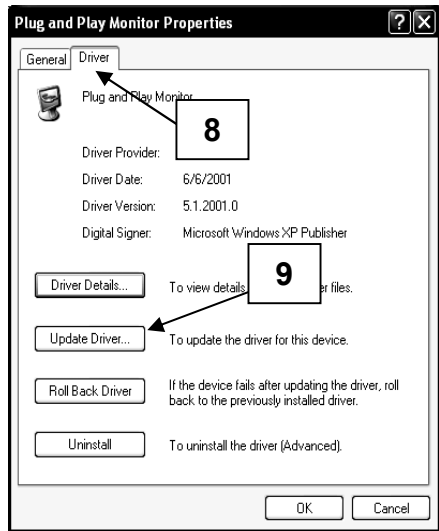
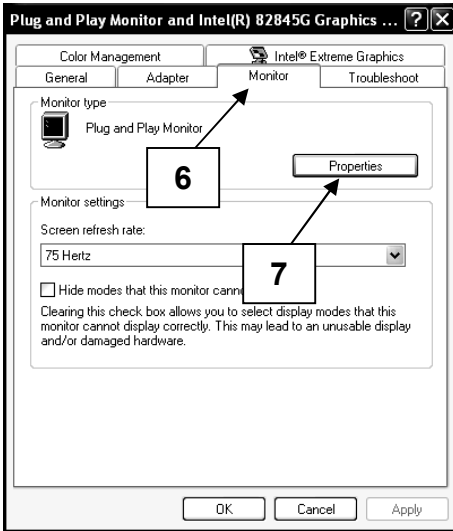


15" TFT-LCD Monitor Driver Installation Manual

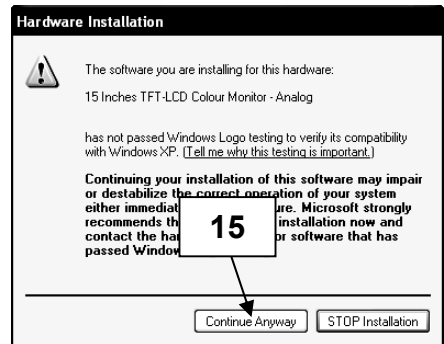
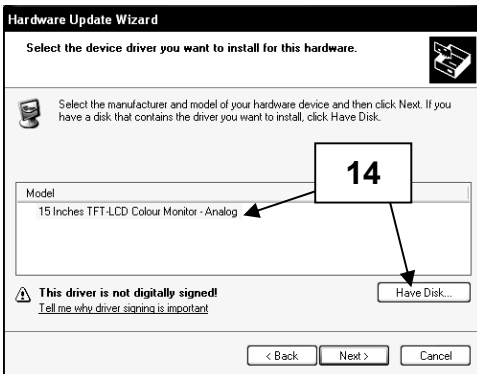
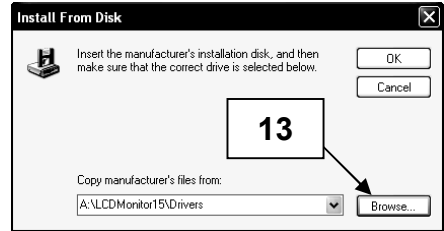
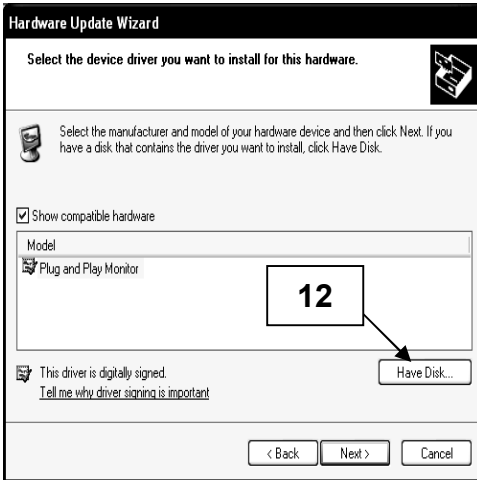
Microsoft® Windows® XP operating system.



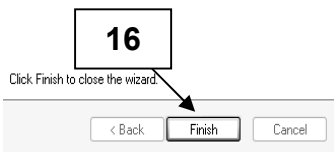
- 1 Click on **“Start”** and then to the **“Control Panel”**.
- 2 Click on **“Switch to Classic View”**. Skip this step if the Control Panel has already been switched to classic view.
- 3 Double click on the **“Display”** icon.
- 4 Click on the **“Settings”** tab.
- 5 Click on the **“Advanced”** button to open up the Advanced Properties box.



- 6 Click On the **“Monitor”** tab.
- 7 Click on the **“Properties”** button.
- 8 Click on the **“Driver”** tab to display the driver properties.
- 9 Click on the **“Update Driver”** button to display the hardware Update Wizard.
- 10 Select **“Install from a list or specific location”**. Click **“Next”**.
- 11 Select **“Don't search. I will choose the driver to install”**. Click **“Next”**.



- 12 Click on the **“Have Disk”** button.
- 13 Click on **“Browse”**. Put the installation diskette in. Specify **A:\LCDMonitor15\Drivers** and click **“OK”**.
- 14 Choose **15 Inches TFT-LCD Colour Monitor - Analog** and click **“Next”**.
- 15 If the above warning message appears, click on **“Continue Anyway”**. This installation will not in anyway damage your system.



- 16 Click **“Finish”** to complete the installation process.

Microsoft® Windows® 95/98/ME operating system.

- 1 Click on “**Start**”, “**Settings**” and then to the “**Control Panel**”.
- 2 Find the “**Display**” Icon and double click on it.
- 3 Click on the “**Settings**” tab and click on the “**Advanced Properties**” button.
- 4 Select the “**Monitor**” tab.
- 5 Click the “**Change**” button.
- 6 Choose “**Specify the location of the driver**” and click “**Next**”.
- 7 Choose “**Display a list of all the driver in a specified location..**” and click the “**Next**” button.
- 8 Click the “**Have Disk**” button.
- 9 Specify **A:\LCDMonitor15\Drivers** and click the “**OK**” button.
- 10 Select “**Show all Hardware**”, and choose **15 Inches TFT-LCD Colour Monitor - Analog**.
- 11 Click “**Next**”.
- 12 Click “**Next**” again and wait until the “**Finish**” button appears.
- 13 Click the “**Finish**” button.
- 14 Click on the “**Apply**” button to complete the driver installation.

Microsoft® Windows® 2000 operating system

- 1 Click on “**Start**”, “**Settings**” and then to the “**Control Panel**”.
- 2 Find the “**Display**” Icon and double click on it.
- 3 Select the “**Monitor**” tab.
- 4 There are 2 cases:-
If the “**Properties**” button cannot be clicked, the monitor is already installed. There is no need to install the monitor driver.
If the “**Properties**” button is active, click the “**Properties**” button and follow the steps below.
- 5 Click on “**Driver**” and then click on the “**Update Driver**” button.
- 6 Choose “**Display a list of the known drivers for this device so that I can choose a specific driver**” and click the “**Next**” button.
- 7 Click the “**Have Disk**” button.
- 8 Specify **A:\ LCDMonitor15\Drivers** and click the “**OK**” button.
- 9 Select the **15 Inches TFT-LCD Colour Monitor - Analog** and click the “**Next**” button.
- 10 Click “**Next**” again and wait until the “**Finish**” button appears.
- 11 Click the “**Finish**” button.
- 12 Click the “**Close**” button to complete the installation.

Note: If the “**Digital Signature Not Found**” is displayed, click the “**Yes**” button and continue with the installation.

© Copyright 2003. All rights reserved.

Windows is a registered trademark of Microsoft Corporation

MC-MAN-000009 Rev. 1.0