

Federal Communications Commission (FCC) Statement

This Equipment has been tested and found to comply with the limits for a class B digital device, pursuant to Part 15 of the FCC rules. These limits are designed to provide reasonable protection against harmful interference in a residential installation. This equipment generates, uses and can radiate radio frequency energy and, if not installed and used in accordance with the instructions, may cause harmful interference to radio communications. However, there is no guarantee that interference will not occur in a particular installation. If this equipment does cause harmful interference to radio or television reception, which can be determined by turning the equipment off and on, the user is encouraged to try to correct the interference by one or more of the following measures:

- Reorient or relocate the receiving antenna.
- Increase the separation between the equipment and receiver.
- Connect the equipment into an outlet on a circuit different from that to which the receiver is connected.
- Consult the dealer or an experienced radio/TV technician for help.

Warning:

A shielded-type power cord is required in order to meet FCC emission limits and also to prevent interference to the nearby radio and television reception. It is essential that only the supplied power cord be used.

Use only shielded cables to connect I/O devices to this equipment.

You are cautioned that changes or modifications not expressly approved by the party responsible for compliance could void your authority to operate the equipment.

IMPORTANT SAFEGUARDS

Warning:

1. Read all of these instructions.
2. Save these instructions for later use.
3. Unplug this monitor from the wall outlet before cleaning. Do not use liquid cleaners or aerosol cleaners. Use a damp cloth for cleaning.
4. Do not use attachments not recommended by the monitor manufacturer as they may cause hazards.
5. Do not use this monitor near water. For example near a bathtub, washbowl, kitchen sink, or laundry tub, in a wet basement, or near a swimming pool, etc..
6. Do not place this monitor on an unstable cart, stand, or table. The monitor may fall, causing serious injury to a child or adult, and serious damage to the appliance. Use only with a cart or stand recommended by the manufacturer or sold with monitor. Wall or shelf mounting should follow the manufacturer's instructions, and should use a mounting kit approved by the manufacturer.
7. Slots and openings in the cabinet and the back or bottom are provided for ventilation, and to insure reliable operation of the television receiver and to protect it from overheating, these openings must not be blocked or covered. The openings should never be blocked by placing the monitor on a bed, sofa, rug, or other similar surface. This monitor should never be placed near or over a radiator or heat register. This monitor should not be placed in built-in installation such as a bookcase unless proper ventilation is provided.
8. This monitor should be operated only from the type of power source indicated on the marking label. If you are not sure of the type of power supplied in your home, consult your monitor dealer or local power company.
9. This monitor is equipped with a three-wire grounding type plug, a plug having a third (grounding) pin.

This plug will only fit into a grounding-type power outlet. This is a safety feature. If you are unable to insert the plug into the outlet, contact your electrician to replace your obsolete outlet. Do not defeat the safety purpose of the grounding-type plug.

10. Do not allow anything to rest on the power cord. Do not locate this monitor where the cord will be abused by persons working on it.

11. Follow all warnings and instructions marked on the monitor.

12. For added protection for this monitor, when it is left unattended and unused for long periods of time, unplug it from the wall outlet. This will prevent damage to the monitor due to power-line surges.

13. Do not overload wall outlets and extension cords as this can result in fire or electric shock.

14. Never push objects of any kind into this monitor through cabinet slots as they may touch dangerous voltage points or short out parts that could result in a fire or electric shock. Never spill liquid of any kind on the monitor.

15. Do not attempt to service this monitor yourself since opening or removing covers may expose you to dangerous voltage or other hazards. Refer all servicing to qualified service personnel.

16. Unplug this monitor from the wall outlet and refer servicing to qualified service personnel under the following conditions:

a. When the power cord or plug is damaged or frayed.

b. If liquid has been spilled into the monitor.

c. If the monitor has been exposed to rain or water.

d. If the monitor does not operate normally by following the operating instructions. Adjust only those controls that are covered by the operating instructions as improper adjustment of other controls may result in damage and will often require extensive work by a qualified technician to restore the monitor to normal operation.

e. If the monitor has been dropped or the cabinet has been damaged.

f. When the monitor exhibits a distinct change in performance- this indicates a need for service.

17. When replacement parts are required, be sure the service technician has used replacement parts specified by the manufacturer that has the same characteristics as the original parts. Unauthorized substitutions may result in fire, electric shock, or other hazards.

18. Upon completion of any service or repairs to this monitor, ask the service technician to perform routine safety checks to determine that the monitor is in safe operating condition.

17" TFT COLOR MONITOR

1. Installing the Monitor

Unpacking

Open the shipping cartons and check the contents.

If any items are missing or damaged, contact your dealer immediately.

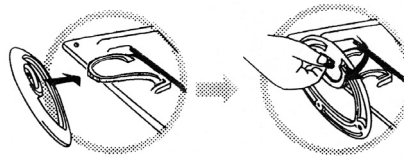
The package should include the following items:

- TFT color monitor
- User's guide
- Power cord
- Signal cable
- DC power adapter
- Audio cable

Installing the Base

Follow these steps to install the base:

1. Turn the monitor down.
2. Assembly the base to the arm with screw.
3. Tie the screw with a coin.



Installing the Monitor

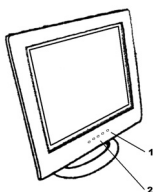
This monitor is equipped with an auto sensing DC power adapter for voltage ranges 100-240VAC, 60/50Hz. Confirm the line voltage designation on the rear panel of the monitor. Follow these steps to install the monitor:

1. Before you connect the cables, make sure that the monitor and the system unit power switches are off.
2. Plug one end of the 15pin-signal cable to the monitor and the other end to the video signal connector at the rear of the system. Tighten the two screws on the cable connector.
3. Connect the DC power cord to the DC jack.
4. Connect the power cable.

ENG

2. Control Functions

The monitor digital control functions are located on the front panel. They are shown in the figure below and described in the following paragraphs.



1.Power Switch with Indicator LED
2.Function Keys

3. Function Select

With the \wedge and \vee knobs, you can adjust the speakers volume.

Press the 1 knob to show the OSD menu. Than use the \wedge and \vee knobs to select a function.

Press the 2 knob to close the OSD menu.

You can hold the 2 knob for more than 3 second to adjust the image quality automatically.

The OSD menu will close automatically after 3-10 seconds without operation and saves any changes you have made.

4. Function Adjustment

1.Signal Select

VGA - Select the image signal coming from the VGA cable.

DVI - Select the image signal coming from the DVI cable.(option)

Exit - Close the Signal Select OSD menu.

2.Video

Brightness - Adjust the luminance level in the image.

Contrast - Adjust the difference in luminance between light and dark areas of the image.

Black Level - Adjust the black Level in the image.

Exit - Close the Video OSD menu.

3.Audio

Volume - Adjust the volume of speakers.

Balance - Adjust the speaker's volume to right side or left side.

Exit - Exit the Audio OSD menu.

4.Color

Color Temperature

User - Adjust the R.G.B. gain level.

6500K - Select color temperature to 6500°K.

9300K - Select color temperature to 9300°K.

Exit - Close the Color Temperature OSD menu.

Flesh Tone - Adjust the flesh tone of the image.

Hue - Adjust the shade of the image color.

Saturation - Adjust the saturation of the image color.

Exit - Close the Color OSD menu.

5.Image

Auto Tune - Adjust geometry of the image automatically.

H. Width - Adjust the horizontal sync size of signal.

H. Phase - Adjust the horizontal sync phase of signal.

H. Position - Adjust the horizontal position of the image.

V. Position - Adjust the vertical position of the image.

Exit - Close the Image OSD menu.

6.Language

Sets the language of the OSD windows.

7.Tools

OSD Control

OSD Timer - Setting the OSD menu display time.

OSD H. Position- Adjust the horizontal position of the OSD menu.

OSD V.Position- Adjust the vertical position of the OSD menu.

Exit - Close the OSD Control OSD menu.

Recall - Recall the factory default setting.

Sharpness - Adjust the picture display more clear.

Exit - Close the Tools OSD menu.

8.Exit

Close the OSD menu.

5. Micro-controller Features

The micro-controller automatically detects the video board installed in your system. When you turn on the monitor, the micro-controller first checks the display mode memory stored in the user setting area of the video board, and then the factory presetting area. It then adjusts to the proper display mode.

6. Display Modes Memory

The micro-controller has the memory capacity to store different display modes, including timing formats and display-settings. This memory capacity is divided into two parts: the user setting area and the factory presetting area.

User Setting Area

The user setting area on the micro-controller maintains in its memory the last display modes set by the user. You can change the settings, or add a nonstandard mode. The micro-controller always detects and displays the last mode stored in the user setting area first when the monitor is turned on.

Factory Presetting Area

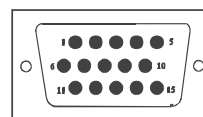
There are some preferred display modes preset in the micro-controller. These display modes are preset at the factory and include the most popular display modes currently available. The micro-controller searches for a proper display mode in this area if it fails to find a proper display mode in the user setting area.

	MODE	Resolution (Dots*lines)	Horizontal Freq.(KHz)	Vertical Freq.(Hz)	Remark
1.	VGA	640×350	31.5	70	Non-interlaced
2.	VGA	720×400	31.5	70	Non-interlaced
3.	VGA	640×480	31.5	60	Non-interlaced
4.	VESA/75	640×480	37.5	75	Non-interlaced
5.	VESA/60	800×600	37.9	60	Non-interlaced
6.	VESA/75	800×600	46.9	75	Non-interlaced
7.	VESA/60	1024×768	48.4	60	Non-interlaced
8.	VESA/70	1024×768	56.5	70	Non-interlaced
9.	VESA/75	1024×768	60.0	75	Non-interlaced
10.	VESA/60	1280×1024	64.0	60	Non-interlaced
11.	VESA/75	1280×1024	80.0	75	Non-interlaced

7. Signal Connector Pin-outs

To connect VGA, 8514A or IBM-compatible graphics adapters, use a 15 pin mini D-type male connector.

15-pin Mini D-type Male Connector					
Pin Assignment					
1	Red Video	6	Red Ground	11	Ground
2	Green Video	7	Green Ground	12	Serial Data I/O
3	Blue Video	8	Blue Ground	13	H. Sync
4	Ground	9	No Connection	14	V. Sync
5	No Connection	10	Sync Ground	15	Serial Clock Input



8. Power Saving Feature

When the power saving active then the power indicator LED will be from Green Light to Amber, and power saving feature complies with these VESA power saving modes:

Mode	H. Sync.	V. Sync.	LED	Power Consumption
Normal	On	On	Green	<40W
Stand-by	Off	On	Amber	< 3W
Suspend	On	Off	Amber	< 3W
Off	Off	Off	Amber	< 3W

The monitor uses the H.Sync and V.Sync signals to determine the operation mode to enter.

The monitor power-saving feature automatically turns off H.Sync and V.Sync if there is no input from the system for a certain period of time. To use this feature, you need a green PC that is compliant with the VESA power saving feature or a software utility to detect system input such as keyboard or mouse.

Time Settings

Time settings are adjusted from the system unit by software. To fulfill the requirements in the NUTEK specification 803299/94 the total time from indicated inactivity to Power Saving position A2 (VESA OFF) must not be set more than 70 minutes. We recommend you switch off the monitor when you do not intend to use it for awhile.

9. Specifications - Model P178

LCD Panel	Size 17" Pixel Pitch: 0.264mm Brightness: 250 cd/m2 Contrast Ratio: 500 : 1 Response Time: 25ms(max.)
Maximum viewable size	17 inch (43.2cm)
Video Input	Analog 15-pin, D-sub connector Digital DVI connector(option)
Display area	338mmx270mm(HxV)
Power supply (Universal)	Input voltage 100-240V /60-50Hz Consumption 40watts maximum
External controls	Power-switch, VGA, DVI(option), Brightness, Contrast, Black level, Volume, Balance, Color temperture (User, 6500°K, 9300°K), Flech tone, Hue, Saturation, H-width, H-phase, H-position, V-position, OSD control, Recall, Sharpness, Exit
Horizontal frequency	30-82KHz
Vertical frequency	50-75Hz
Dimensions (with carton)	490mm×155mm×500mm (W×D×H)
Max. Resolution	1280×1024@75Hz (Non-Interlaced)
Power Saving	With EPA standard
Plug & Play	DDC 1/2B
Weight	N.W. 5.5Kgs G.W. 7.0Kgs
Ambient temperature	Operation 5°C – 35°C Non-operating -20°C – 60°C
Humidity	Operating 20%-80% Storage 10%-90%

*Specifications are subject to change without notice.