

Prestigio Nobile1590W

User's Manual

Notice

The information in this user's manual is subject to change without notice.

THE MANUFACTURER OR RESELLER SHALL NOT BE LIABLE FOR ERRORS OR OMISSIONS CONTAINED IN THIS MANUAL AND SHALL NOT BE LIABLE FOR ANY CONSEQUENTIAL DAMAGES, WHICH MAY RESULT FROM THE PERFORMANCE OR USE OF THIS MANUAL.

The information in this user's manual is protected by copyright laws. No part of this manual may be photocopied or reproduced in any form without prior written authorization from the copyright owners.

Prestigio continuously works to improve the quality of its products. Technical specifications of the same model purchased earlier may vary from the ones currently available on Prestigio website. The product characteristics published on Prestigio web-sites reflect the actual up-to-date product specifications of goods available for sale from Prestigio now.

Copyright August, 2005

All rights reserved.

Microsoft and Windows are registered trademarks of Microsoft Corporation. DOS, Windows 95/98/ME/2000/NT/XP are trademarks of Microsoft Corporation.

Product names mentioned herein may be trademarks and/or registered trademarks of their respective owners/companies.

The software described in this manual is delivered under a license agreement. The software may be used or copied only in accordance with the terms of the agreement.

This product incorporates copyright protection technology that is protected by U.S. patents and other intellectual property rights. Use of this copyright protection technology must be authorized by Macrovision, and is intended for home and other limited viewing uses only unless otherwise authorized by Macrovision. Reverse engineering or disassembly is prohibited.

Preface

Protecting Your Computer - Avoid Abusive Handling and Adverse Environment

Follow the advice below will help ensure that you get the most out of your Investment.

Your computer will serve you well if you take good care of it.

Do not expose the computer to direct sunlight or place it near sources of heat.

Do not subject it to temperatures below 0oC (32oF) or above 30oC (86oF).

Do not expose the computer to magnetic fields.

Do not expose the computer to moisture or rain.

Do not spill water or liquid on the computer.

Do not subject the computer to adverse shock and vibration.

Do not expose the computer to dust and dirt.

Do not place objects on top of the computer to avoid damaging the computer.

Do not place the computer on rocky surfaces.

Here are some ways of taking care of your AC adapter.

Do not connect the adapter to any devices other than your computer.

Do not let water get into the adapter.

Do not block the ventilation airway of the adapter.

Keep the adapter in a cool and ventilated place.

Do not step on the power cord or place heavy objects on top of it.

Carefully tuck away the power cord and any cables away from pedestrian traffic.

When unplugging the power cord, do not pull on the cord itself but pull on the plug.

Keep the adapter away from children.

The total ampere ratings of the equipment plugged in should not exceed the ampere rating of the cord if you are using an extension cord.

The total current rating of all equipment plugged into a single wall outlet should not exceed the fuse rating.

Do not connect other AC adapter to your notebook. This Notebook uses exclusively the AC adapter: Lishin 0202A2090 (90W), Liteon PA-1900-05 (90W),

When cleaning the computer, observe these steps:

1. Power off the computer and remove the battery pack.
2. Disconnect the AC adapter.
3. Use a soft cloth dampened with water. Do not use liquid or aerosol cleaners.

Contact your dealer or see your service technician if any of the following occurs:

Computer has been dropped or the body has been damaged.

Liquid has been spilled into the product.

The computer does not operate normally.

Cleaning the Ventilation Grills:

It is suggested that you clean the ventilation grills regularly to maintain optimal thermal regulation of the notebook. To do this, you may use a soft brush or a vacuum cleaner (with appropriate head adapter) to remove the dust buildup on the ventilation grills.

GETTING TO KNOW THE BASICS

Performance Features

High Performance Processor with Alviso Chipset

The notebook PC is equipped with a powerful Mobile Intel Pentium M or Celeron M processor. Together with the latest Alviso chipset and technologies, the system offers advanced PC performances.

Unique Dual Graphic Boot Feature

The system has two graphic engines built-in. A switch allows you to choose either the external n-Vidia NV43M (GeForce Go 6600) graphic engine with DDR I (64/128-MB) / DDR II (128/256-MB) dedicated frame buffer or the integrated Intel GMA900 Extreme3 graphic engine.

This unique feature gives you the flexibility to select the graphic engine that is best-suited for your needs – higher performance or lower battery consumption..

Both graphic engines are DirectX 9 compatible.

LCD Display

The computer is equipped with a 15" or wide 15.4" TFT high-resolution display panel for clear text and brilliant colors.

Serial ATA Hard Disk Drive Support (on certain models)

The serial ATA bus offers higher data throughput than the traditional parallel ATA bus. This gives you optimal hard drive performance.

Expandability

The system offers upgradeable hard disk drive and 2 DDR SDRAM sockets for expansion, allowing the user to easily increase the storage and system capacities as the need arises.

Built-in Multiple Card Reader

The built-in 4-in-1 card reader lets you access many of the portable media formats (SD Card, MMC Card, MS Card, and MS Pro Card).

Ethernet Port

The system provides built-in 10/100Mbps or 10/100/1000Mbps Ethernet network adapter for high bandwidth network connection.

Firewire (IEEE1394 / 1394a) and USB2.0 ports

In addition to a full array of built-in I/O ports, the computer offers IEEE1394 for ultra high-speed connection to high bandwidth digital video devices and USB2.0 ports to connect to any USB-based peripheral devices.

Wireless LAN

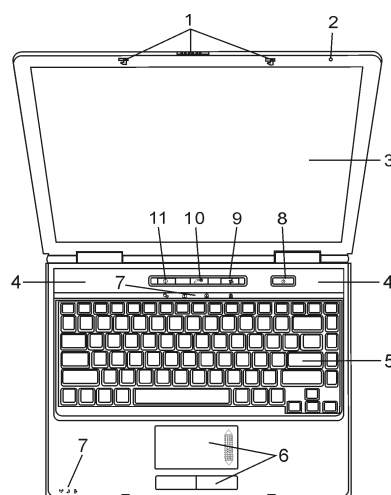
The internal Wireless LAN module allows your notebook to connect wirelessly to other 802.11-enabled systems, devices, or network.

Internal USB slot for integrated USB Devices (Optional)

The optional USB Bluetooth module or USB Thumb Drive gives you added function to the notebook.

System At A Glance

Top View



1. LCD Latch

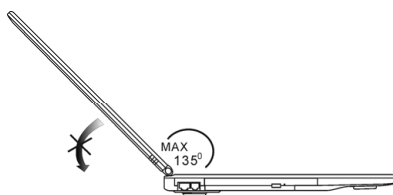
The LCD latches lock / unlock the LCD panel.

2. Built-in Microphone

The built-in microphone records sound.

3. LCD Display

The panel is where the system content is displayed. The LCD panel has a maximum opening of 135 degrees. Do not push it down forcibly.



4. Built-in Stereo Speakers

The built-in speakers output the sound in stereo.

5. Keyboard

The keyboard is used to enter data. It has an embedded numeric keypad and cursor control keys. (See Keyboard Section for details.)

6. Touch Pad

The touch pad is a built-in pointing device with functions similar to a mouse.

7. LED Status Indicator

The LED Status indicators reveal the status of these functions: Numeric keypad, cap lock, scroll lock, WLAN module enabling and disabling and also the ODD, HDD activities. (See the LED Status Indicator Section for details.) The LED Status indicators also reveal the status of the system power state and battery-charging state. See the LED Status Indicator Section for details.

8. Power / Suspend Button

The power/suspend button turns the notebook on and off and it also acts as a system suspend key. Press momentarily to turn on the system. Press and hold for at least 4 seconds to turn off the system. How this key behaves can be defined in [Start > Settings > Control Panel > Power Options > Advanced] menu. Press the power / suspend button again to return from the suspend mode.

Note: When the system power is initially turned on, the Scroll-lock, Cap-lock, and Numeric keypad LED indicators will light up momentarily to indicate the start of the Power-On sequence.

9. Wireless On/Off Button

Press the Switch to disable or enable the Wireless function. If the WLAN function is enabled, the WLAN LED turns green; otherwise, the WLAN LED is dark.

10. Instant-On Multimedia Player Launch Key

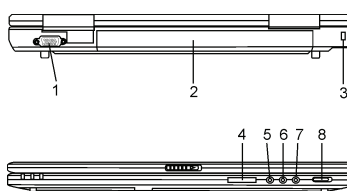
When the system is powered off, pressing the key launches a multimedia application that allows you to watch movies files, listen to music, or view photos in the optical drive or hard disk drive without having to boot to Windows.

Note: The way the Instant-On software works is that when the quick key is pressed (when the system is in Power-Off mode), the system boots to a Linux-based O/S and media player application.

11. Internet Explorer Quick Key

Pressing the button launches Internet Explorer in Windows.

Front and Rear View



Warning: Do not place any heavy objects on the top of notebook. This may damage the display

1. External VGA Port

The 15-pin VGA analog port is for connecting the external CRT monitor or projector.

2. Battery Pack

The battery pack is a built-in power source for the notebook.

3. Kensington Lock Key Hole

A Kensington-type security lock latches to this keyhole for anti-theft purpose.

4. 4-in-1 Card Reader

The 4-in-1 Card Reader supports SD Card, MS Card, MMC Card, and MS-Pro Card.

5. Microphone Jack

The microphone jack (3.5-mm diameter) is where you connect a microphone.

6. Audio Line-in Jack

The Audio Line-in jack (3.5-mm diameter) is where you connect an external audio input source such as a CD Player.

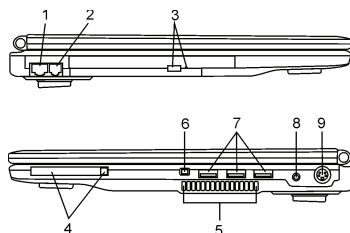
7. Stereo Headphone / SPDIF-out Jack

The stereo headphone jack (3.5-mm diameter) is where you connect the headphones or external speakers. Alternatively, you may connect the SPDIF output to an external DTS, AC3, or PCM sound processor / decoder in your home stereo system.

8. External VGA On/Off Switch

You must make the selection before you turn on the notebook. If you leave the switch to the ON position, the computer will boot to the external graphic engine (n-Vidia GeForce Go 6600, which has higher performance and higher power consumption). If you leave the switch to the OFF position, the computer will boot to the integrated graphic engine (Intel GMA900 Extreme3, which has lower performance and lower power consumption).

Side Views



Warning: Do not place any heavy objects on the top of notebook. This may damage the display

1. Ethernet / LAN Port

The port connects to a network hub via the RJ-45 cable and also conforms to 10/100Base-TX transmission protocol.

2. Modem Port

This is where you plug the phone jack (RJ-11) for fax/modem functions.

3. Optical Drive and Disk Eject Button and Manual Eject Key Hole

If your computer comes with the Combo drive, DVD-RW, DVD+RW, or DVD-Dual drive, you may save data onto a CD-R / CD-RW or DVD RW disc. Press the eject button to eject the disk tray. The manual eject keyhole allows you to manually eject a jammed disk.

4. PC Card Slot (Type II PCMCIA) and Card Eject Button

The slot is where PC Card (Type II PCMCIA) is inserted. Press the eject button to release the PC Card.

5. Ventilation Grill

The fan grill is where air is exchanged to dissipate the internal heat. Do not block this airway completely.

6. Firewire / IEEE1394 / 1394a Port

This is a high-speed serial data port. You may connect any Fire-wire-ready device to this port.

7. USB2.0 Port (x3)

The Universal Serial Bus (USB2.0-compliant) port allows you to connect a wide variety of devices to your computer at a rate of up to 480 Mbps. This port conforms to the latest USB2.0 plug-and-play standards.

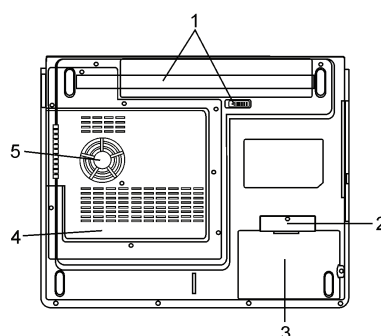
8. Power Jack (DC-in)

The DC-out jack of the AC Adapter connects here and powers the computer.

9. TV (S-Video) Port

The S-Video port permits you to redirect the screen output to a television set or any analog video playback device. This TV Port is copyright protected; when DVD movie is played, the output is scrambled to prevent analog recording.

Bottom View



1. Battery Pack and Battery Latch

The battery pack is a built-in power source for the notebook. Slide the battery latch to release the battery pack.

2. USB Device Cover (Optional)

Underneath the cover, there is a USB connector. You may install the optional Bluetooth module or USB Thumb Drive into this slot.

3. Hard Disk Drive Cover

The system's hard disk drive is located under the cover. The HDD can be upgraded to a larger capacity.

4. System Device Cover

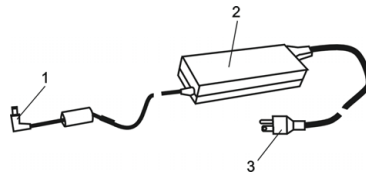
The system's processor with cooler assembly, Wireless LAN module, and DDR memory module are located under the case cover. You may install the WLAN module and the system memory can be upgraded to a larger capacity.

5. Ventilation Grill

The fan grill is where air is exchanged to dissipate the internal heat. Do not block this airway completely.

Warning: Do not block the Fan Grill outlet. Place the machine on hard surface only. The bottom case may get very hot.

AC Adapter



1. DC-out Connector

The DC-out connector docks to the power jack (DC-in) on the computer.

2. Adapter

The adapter converts alternating current into constant DC voltage for the computer.

3. AC Plug








The AC plug plugs to the AC wall outlet.

Warning: Make sure you are using a standard 3-prong AC wall socket with a ground pin. If not, you may feel a slight tingling sensation on any of the computer's metal parts such as the I/O ports. This is caused by leakage current when the AC adapter is not properly grounded (via the ground pin). However, the amount of leakage current is within the safety regulation and is not harmful to human body.

LED Status Indicator

The LED Status Indicator displays the operating status of your notebook. When a certain function is enabled, an LED will light up. The following section describes its indication.







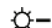
System & Power Status Indicators

LED Graphic Symbol	Indication
	Green light indicates the WLAN module is active.
	Blinking green light indicates the notebook is in suspend mode. Persistent green light indicates the Silent mode is active.
	Blinking orange light indicates the battery is being charged. Blinking red light indicates the battery power is low when the system is turned ON. Persistent green light indicates the battery is Full.
	Green light indicates the hard drive and/or optical drive is being accessed.
	Greenlight indicates the numeric keypad is activated.
	Green light indicates the cap-lock is activated.
	Green light indicates the scroll-lock is activated.

Note: When the system power is initially turned on, the Scroll-lock, Cap-lock, and Numeric keypad LED indicators will light up momentarily to indicate the start of the Power-On sequence.

Keyboard Features

Function Keys (Quick Keys)

Graphic Symbol	Action	System Control
	Fn + F1	Enters Suspend Mode.
	Fn + F3	Audio Mute on or off.
	Fn + F4	Changes Display Mode: LCD-only, CRT-only and LCD&CRT.
	Fn + F5	Turns Speaker Volume up.
	Fn + F6	Turns Speaker Volume down.
	Fn + F7	Increases Display Brightness.
	Fn + F8	Decreases Display Brightness.
	Fn+Num Lk	Enables the embedded keypad to work in numeric mode. The keys act like numeric keypads in a calculator. Use this mode when you need to do a lot of numeric data entry. An alternative would be to connect an external numeric keypad.
	Fn + Scr Lk	Press the Scroll Lock key and then press ^ or v to move online up or down.

ENG

For various system controls, press the Fn (Function) key and the Fx key simultaneously.

Windows Keys

Your keyboard also has two Windows keys:



1. Start Key

This key allows you to pull up the Windows Start Menu at the bottom of the taskbar.

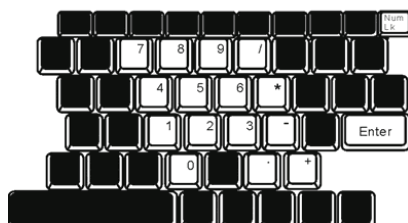


2. Application Menu Key

This key brings up the popup menu for the application, similar to a click of the right mouse button.

Embedded Numeric Keypad

Press Fn+NumLk to enable the embedded numeric keypad. The numbers are printed in upper right corner of a key, in a color different from the alphabets. This key pad is complete with arithmetic operators (+, -, *, /). Press Fn+NumLk to revert to normal character keys.



Touch Pad

The built-in touch pad, which is a PS/2-compatible pointing device, senses movement on its surface. As you move your fingertip on the surface of the pad, the cursor responds accordingly.

The following items teach you how to use the touch pad:

1. Move your finger across the touch pad to move the cursor.
2. Press buttons to select or execute functions. These two buttons are similar to the left and right buttons on a mouse. Tapping on the touch pad twice produces is similar to clicking the left button of a mouse.

Function	Left Button	Right Button	Equivalent Tapping Action
Execution	Click twice quickly		Tap twice (at the same speed as double-clicking the mouse button)
Selection	Click once		Tap once
Drag	Click and hold to drag the cursor		Tap twice quickly and on the second tap hold finger to the touchpad to drag the cursor
Access Context Menu		Click once	
Move One Page Up or Down			

Tips on Using the Touch Pad:

1. The double-click speed is timed. If you double-click too slowly, your notebook responds as if you single-clicked twice.
2. Keep your fingers dry and clean when using the touch pad. Also keep the surface of touch pad clean and dry to prolong its life.
3. The touch pad is sensitive to finger movements. Hence, the lighter the touch, the better the response. Heavy touch does not produce better response.

Graphic Subsystem

Your computer uses a high performance 15-inch or 15.4-inch (wide) active matrix TFT panel with high resolution and multi-million colors for comfortable viewing.

The system has two graphic engines built-in. A switch allows you to choose either the external n-Vidia NV43M (GeForce Go 6600)/ATI M26 graphic engine with DDR I (64/128-MB) / DDR II (128/256-MB) dedicated frame buffer or the integrated Intel GMA900 Extreme3 graphic engine.

This unique feature gives you the flexibility to select the graphic engine that is best-suited for your needs – higher performance or lower battery consumption..

Both graphic engines are DirectX 9 compatible.

Adjusting the Display Brightness

The notebook uses special key combinations, called hot keys, to control brightness.

Press Fn+F7 to increase the brightness.

Press Fn+F8 to decrease the brightness.

Note: To maximize your battery operating time, set the brightness to the lowest comfortable setting, so that the internal backlight uses less power.

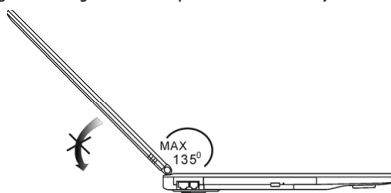
Extending the Life of the TFT Display Device

Observe the following guidelines to maximize the life of the backlight in the display.

1. Set the brightness to the lowest comfortable setting (Fn+F8).
2. When working at your desk, connect your notebook to an external monitor and disable the internal display Fn+F4.
3. Do not disable the suspend time-outs.
4. If you are using AC power and have no external monitor attached, change to suspend mode when not in use.

Opening and Closing the Display Panel

To open the display, push the LCD latch inwardly and lift up the lid. Then tilt it to a comfortable viewing position. The LCD panel has a maximum opening of 135 degrees. Do not push it down forcibly.



To close the display cover, fold it down gently until the LCD latches click into place.

Warning: To avoid damaging the display, do not slam it when closing. Do not place any object on top of the computer when the display is closed



Audio Subsystem

Your computer's audio subsystem is Sound Blaster Pro-compatible.

ENG

Adjusting the Volume Manually

To increase the volume, press Fn+F5.

To decrease the volume, press Fn+F6.

Adjusting the Audio Volume in Windows

1. Click the speaker symbol in the task tray in Windows.
2. Drag the volume control bar up or down to adjust the volume.
3. To temporarily silence the speaker without changing the volume setting, click Mute.

Voice Recording

A built-in microphone allows you to record sound. You will need to use audio processing software to enable the built-in microphone. For example, you may use Microsoft Sound Recorder.

Modem

Your computer comes with a 56K V.92 internal fax/modem and a phone jack (RJ-11), which is located on the left side of your computer.

Use a telephone cable to connect the computer to the telephone wall outlet.

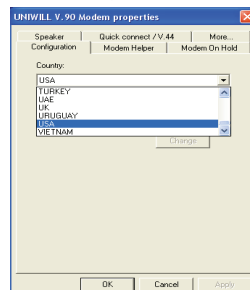
Connecting the Modem

1. Plug one end of the phone line into the modem port located on the rear side of the computer. (For EMI compliance, you need to clip the included EMI CORE to the phone line.)
2. Plug the other end of the line into the analog phone wall outlet.

Depending on where your computer is used, you may need to change settings in the modem. Correct setting will allow you to maintain a stable connection in a country where its telecommunication system may be different to others.

To change the modem setting, do the following:

1. Go to [Start > Settings > Control Panel] and double-click on Modem Settings icon. You will see a similar dialog box.
2. Click on the pull-down menu and select the country where it is applicable. Click on OK to exit.



Ethernet

Your computer is equipped with a 10/100Base-TX or 10/100/1000Base-TX Fast Ethernet network adapter. Connect the active LAN cable to the RJ-45 LAN port located on the left side of the computer. This allows you to access and transmit data in the local area network.

Connecting to the Network

Use Unshielded Twisted Pair (UTP) Ethernet cable only.

1. Insert one end of the UTP cable into the network connector until the connector snaps securely into the receptacle.
2. Either connect the other end of the cable to an RJ-45 jack wall outlet or to an RJ-45 port on a UTP concentrator or hub in the network.

Cabling Restriction for Networks

The following restrictions should be observed for 10/100/1000BASE-TX networks:

The maximum cable run length is 100 meters(m) (328 feet[ft]).

For 100Mbps or 1000Mbps operations, use Category 5 wiring and connections.

Note: Consult Windows manual and / or Novell Netware user's guide for the software installation, configuration, operation of the network.

BATTERY POWER & POWER MANAGEMENT

TFT display, central processor, hard disk drive are the major hardware subsystems that consume the most power. Power management deals how these key components should behave to conserve power. For example, you can have the system turn off its display after 2 minutes of inactivity to save power. Efficient power management can help you work longer sessions before having to recharge the battery.

The Battery Pack

Lithium-Ion Battery

Your notebook uses a six-cell or nine-cell (optional) Lithium-Ion battery pack that provides power when you don't have access to an AC outlet.

Note: It is necessary that you charge the battery pack for at least 6 hours before using it for the first time.

Note: In the Standby Suspend mode, a fully charged battery loses its power in roughly 1/2 day or less. When not being used, the battery's power will deplete in 1-2 month.

Battery Low-Power Warning

1. Low Battery Warning

Low battery condition occurs when battery power is reduced to 6%. The red battery status LED indicator blinks and the system beeps once every 16 seconds or so.

2. Very Low Battery Warning

Very Low battery condition occurs at 3 % power remaining. The red battery status LED indicator blinks and the system beeps at 4-second interval.

When the notebook warns you of its low battery condition, you will have about 3-5 minutes to save your current work.

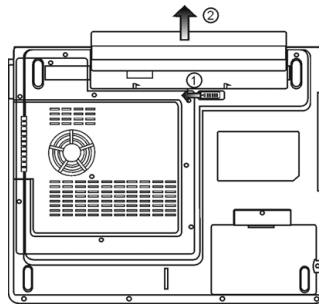
Warning: Do not expose battery packs to temperatures below 0 degree Celsius (32 degree F) or above 60 degree C (140F). This may adversely affect the battery pack.

Note: Press Fn+F3 to turn off the battery warning beep.

Installing and Removing the Battery Pack

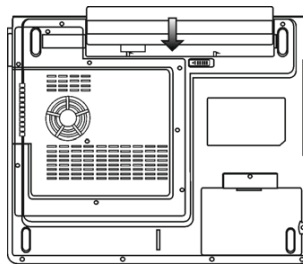
To Remove the Battery Pack:

1. Place the notebook bottom-side up on a flat and secured surface.
2. Push the latch and pull the battery's hard case away from the notebook.



To Install the Battery Pack:

1. Place the notebook bottom-side up on a flat and secured surface.
2. Carefully insert the battery pack into the battery compartment of the notebook.



Charging the Battery and Charging Time

To charge the battery, while the battery pack is in the notebook, plug the AC adapter into the notebook and an electrical outlet.

The charging time is approximately 4-6 hours when the notebook is turned off and approximately 6-10 hours when the notebook is turned on.

When the battery is fully charged, the battery charge indicator becomes green.

Note: If system runs at heavy loading or in a high temperature environment, the battery may not be fully charged. You need to continue to charge it with the AC adapter plugged in until the charging LED turns green.

Checking the Battery Level

You can check the remaining battery power in the Windows battery status indicator, which is located at the lower right-hand corner of the task bar. (If you do not see a battery or AC-in icon on the task tray, go to Power Options Properties box and click on the Advanced tab. Check off "Always show icon on the task bar".)

Alternatively, you can access the power meter by clicking the Power Options icon in the Windows Control Panel.

Prolonging the Battery's Life and Usage Cycles

There are ways you can do to prolong the use of battery.

Use the AC adapter wherever AC wall outlet is available. This will ensure uninterrupted computing.

Purchase additional battery pack.

Store the battery pack in room temperature. Higher temperature tends to deplete the battery's power faster.

Make good use of the power management function. Save To Disk (Hibernate) saves the most energy by storing current system contents in a hard disk space reserved for this function.

The life expectancy of the battery is approximately 300 recharges.

See the notices section in the beginning of the user manual on how to care for the battery pack.

Note: Read Section Protecting Your Notebook in the beginning of this manual for tips about how to maintain the battery pack.

Note: To achieve optimal battery performance, you may need to do a battery calibration at a 3-month interval. To do this:

1. Fully charge the battery.
2. Then discharge the battery by entering the BIOS setup screen. (Press F2 key as soon as you turn on the computer. And let it remain at the setup screen until the battery runs out.
3. Fully charge the battery again.

Using Windows Power Options

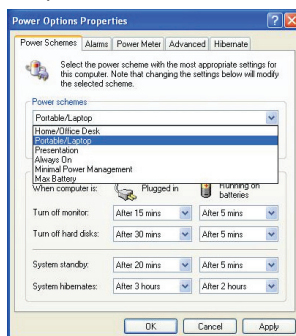
Windows Power Management provides basic power saving features. In the Windows Power Options Properties [Start > Settings > Control Panel > Power Options] dialogue box, you may enter time-out values for display and hard disk drive. Windows power manager saves power by turning off hard drive after 1 minute of inactivity, for example.

Windows' Power Schemes

The power management control panel in Windows XP, known as Power Schemes, is designed to provide the user with an easy-to-use interface. The Power Schemes tab can be found in the Power Options Properties panel that is accessible via the control panel window. Schemes are easy to understand, based on notebook usage scenarios, and control not only processor power usage but other system peripherals as well. Go to [Start > Settings > Control Panel] and double-click

the Power Options icon.

Always on mode puts the processor into maximum performance mode, which provides no power saving. The other schemes control processor performance based on demand. For example, Max Battery mode lowers the processor's speed and voltage to conserve power as much as possible.



In this dialog box, you can manually set the LCD and hard drive's time-out values in the Plugged in column and in the Running on batteries column. Lower time-out values will save more battery power.

Note: Also consult Windows user guide for more information on how to use Windows power management functions.

Note: Actual dialogue box shown above may appear slightly different.

Suspend Mode

Standby Suspend

The system automatically enters this mode after a period of inactivity, which is set in the Power Schemes dialog box. In Standby mode, hardware devices, such as display panel and hard disk, are turned off to conserve energy.

Hibernate Suspend

In this mode, all system data are saved in the hard disk before powering down. When this mode is activated, all system state and contents are saved to the hard disk drive after a period of inactivity defined by the user. No power or very little power is drawn from the battery module under this mode.

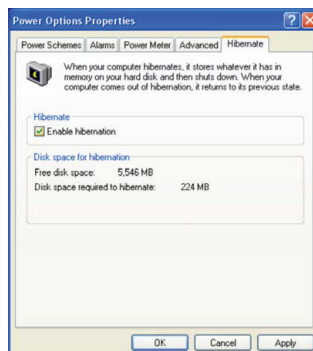
However, depending on how much RAM that have been installed on your computer, the amount of time the system requires to restore all its previous contents can range from 5 to 20 seconds.

For Windows 2000 / XP users, hibernation is handled by the operating system; therefore, no special disk partition or disk file is necessary.

If you wish to activate Hibernate mode, you need enable Hibernate Support in the Hibernate tab of the Power Options menu.

Note: Do not install or remove the memory module when the system is in the suspend mode.

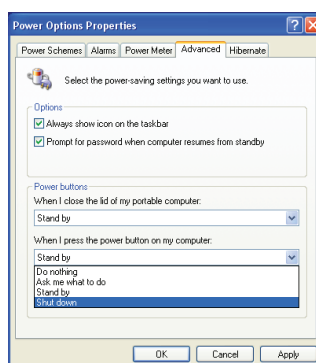
Note: Actual dialogue box shown above may appear slightly different.



Power Button Action

The notebook PC's power button can be set to turn off the system or activate the suspend mode.

Go to [Start > Settings > Control Panel > Power Options] and click on the Advanced tab. In the pull-down menu, select how you wish the power button to work as.



Note: Actual dialogue box shown above may appear slightly different.

Warning: In the When I close the lid of my portable computer pull-down menu, DO NOT select Do nothing – otherwise the system will still run at high speed while the processor's fan grill is fully blocked by the closed LCD panel. The heat will damage the LCD panel.

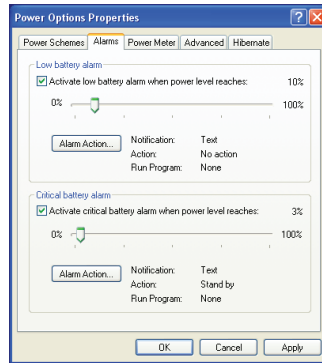
Low Battery Warning

You can define when and how the system warns you of its battery-low condition.

Go to the Alarms tab in the Power Options Properties box. If you wish to hear audible beeps, click on the Alarm Action button and put a check on Sound Alarm.

Note: Consult Windows user guide for more information on how to use Windows power management functions.

Note: Actual dialogue box shown above may appear slightly different.



Power Menu Quick Access

Instead of making specific selections in the Power Options Properties box, you can quickly and easily specify which pre-set power saving function you desire by clicking on the Battery icon at the lower right-hand corner of the task bar. (If you do not see a battery or AC-in icon, go to Power Options Properties box and click on the Advanced tab. Check off ``Always show icon on the task bar``.) Select Max Battery if you want the system to enter suspend mode more often. Or, select Always On if your notebook PC is plugged into an AC power source.



Note: Actual dialogue box shown above may appear slightly different.

TROUBLE SHOOTING

Your computer has been fully tested and complies with the system specifications before shipping. However, incorrect operations and/or mishandling may cause problems.

When you encounter a problem, you should first try to go through the recommendations in this chapter. Instead of returning the computer and waiting for repair, you may easily solve the problems by considering the following scenarios and possible solutions. If the error continues, contact your reseller for service information.

Before taking further actions, consider the following suggestions:

- Check to see if the problem persists when all the external devices are removed.
- Check to see that the green light indicator on the AC adapter is lit.
- Check to see the power cord is properly plugged to the wall outlet and to the computer.
- Check to see the power indicator of the computer is on.
- Check to see if your keyboard is operational by pressing and holding any key.
- Check for any incorrect or loose cable connections. Make sure the latches on the connectors latch securely on to the receptor end.
- Be sure you have not performed an incorrect setting on the hardware devices in the BIOS Setup utility. A faulty setting

may cause the system to misbehave. If you are not sure of the changes you made, try to restore all the settings to factory defaults.

Be sure all the device drivers are installed properly. For example, without the audio driver properly installed, the speakers and microphone will not work.

If external devices such as USB camera, scanner, printer do not function correctly when connected to the system, it is usually the device's own problem. Consult the device's manufacturer first.

Some software programs, which have not gone through rigorous coding and testing, may cause problems during your routine use. Consult the software vendor for problem solving.

Legacy peripheral are not plug-and-play capable. You need to restart the system with these devices powered up and connected first.

Be sure to go to BIOS SETUP and load DEFAULT SETTING after BIOS re-flash.

Be sure the Quick Key Lockout Switch on the bottom of the computer is not engaged; otherwise the quick keys will not work.

Audio Problems

No Audio output -

Software volume control is turned down in Microsoft Sound System or is muted. Double-click the speaker icon on the lower right corner of the taskbar to see if the speaker has been muted or turned down all the way.

Most audio problems are software-related. If your computer worked before, chances are software may have been set incorrectly.

Go to [Start > Settings > Control Panel] and double-click the Sounds and Audio Devices icon. In the Audio page, make sure that Realtek HD Audio is the default playback device.

Sound cannot be recorded -

Double-click the speaker icon on the lower right corner of the taskbar to see if the microphone has been muted.

1. Click Options and select Properties.

2. Select Recording and click the OK button.

3. After Click OK button, the recording volume control panel will appear.

Go to [Start > Settings > Control Panel] and double-click the Multimedia icon (or Sounds and Audio Devices icon). In the Volume or Audio page, make sure that Realtek HD Audio is the default recording device.

Hard Disk Problems

The hard disk drive does not work or is not recognizable -

If you had just performed a hard disk upgrade, make sure the hard drive connector is not loose and the hard disk drive is also correctly seated. Remove it and reinsert it firmly, and restart your PC.

The new HDD may need to be partitioned and reformatted. O/S and drivers will need to be re-installed as well.

Check the hard disk indicator LED. When you access a file, the LED lamp should light up momentarily.

The new HDD may be defective or is not compatible.

If your computer has been subjected to static electricity or physical shock, you may have damaged the disk drive.

The hard drive is making abnormal whining noises -

You should back up your files as soon as possible.

Make sure the source of noise is indeed from the hard drive and not the fan or other devices.

The hard disk drive has reached its capacity -

Run Disk Cleanup utility in Windows. [Start > All Programs > Accessories > System Tools > Disk Cleanup] The system will prompt you for what to do.

Archive files or programs that you had no longer used by moving them to an alternative storage medium (floppy disk, optical record-able disk, etc.) or uninstall programs that no longer use.

Many browsers store files in the hard drive as a cache to speed up the performance. Check the program's Online Help for instructions on decreasing the cache size or on removing temporary Internet files.

Empty the Recycle Bin to create more disk space. When you delete files, Windows saves them to the Recycle Bin.

The hard disk takes longer to read a file -

If you have been using the drive for a period, the files may be fragmented. Go to [Start > Programs > Accessories > System Tools > Disk Defragmenter] to perform a disk defragmentation. This operation may take a while.

Interrupt requests or problems with other hardware devices may have occupied the CPU and therefore slows down the system performance.

The files are corrupted -

Run the Error-checking utility in Windows to check the HDD. Double-click My Computer. Right-click C: and select Properties. Click Check Now in Error-checking in Tools.

Optical Drive Problems

The optical drive does not work -

Try rebooting the system.

The disk is damaged or files are not readable.

After you have inserted a CD-ROM disk, it may take a moment before you can access its content.

The drive does not read any disks -

The CD may not be properly seated in the tray. Make sure the disk is firmly seated onto the spindle.

The disk is damaged or not readable.

The disk cannot be ejected -

Normally, it takes a few seconds to eject the disk.

If the disk cannot be ejected, it may be mechanically jammed. Straighten out a paper clip and insert it to a tiny hole next to the eject button. This should reject the disk tray. If not, return the unit for repair. Do not forcefully pull on the disk tray.

The Combo or DVD RW drive (optional device) cannot record -

You need to purchase and install a burner utility program to record files to a blank media.

Display Problems

The display panel is blank when the system is turned on -

Make sure the computer is not in the Standby or Hibernate suspend modes. The display is turned off to conserve energy in these modes.

The screen is difficult to read -

The display resolution should at least be set to at least 1024x768 for optimal viewing.

1. Go to [Start > Settings > Control Panel] and double-click the Display icon.

2. Under the Settings page, set screen resolution to at least 1024x768 and choose at least 256 colors.

The screen flickers -

It is normal if the display flickers a few times during shutting down or powering up.

Keyboard and Mouse Problems

The built-in touch pad performs erratically -

Make sure there is no excess perspiration or humidity on your hand when using the touch pad. Keep the surface of the touch pad clean and dry.

Do not rest your palm or wrist on the surface of the touch pad while typing or using the touch pad.

The built-in keyboard accepts no input -

If you are connecting an external keyboard to the system, the built-in keyboard may not work.

Try restarting the system.

The characters on the screen repeat while I type. -

You may be holding the keys down too long while you're typing.

Keep the keyboard clean. Dust and dirt under the keys could cause them to stick.

Configure the keyboard to wait longer before the auto repeat feature starts. To adjust this feature, Go to [Start > Settings > Control Panel], and double-click the Keyboard icon. A dialogue box shows up with the adjustable settings for the keyboard.

CMOS Battery Problem

A message "CMOS Checksum Failure" displays during the booting process or the time (clock) resets when booting -

Try to reboot the system.

If the message "CMOS Checksum Failure" appears during the booting procedure even after rebooting, it may indicate failure of the CMOS battery. If so, you need to replace the battery. This battery normally lasts two to five years. The battery is of type CR2032 (3V). You may replace it by yourself. The battery is located under the System Device Cover on the bottom of the notebook.

Memory Problems

The POST does not show an increased memory capacity when you have already installed additional memory -

Certain brands of memory module may not be compatible with your system. You should ask your vendor for a list of compatible DIMM.

The memory module may not be installed properly.

The memory module may be defective.

The O/S issues an insufficient memory error message during operation -

This is often a software or Windows-related problem. A program is draining the memory resources.

Close the application programs you're not using and restart the system.

You need to install additional memory module.

Modem Problems

The built-in modem does not respond -

Make sure the modem driver is loaded properly.

Go to [Start > Settings > Control Panel > Phone and Modem Options] and go to Modems tab. Make sure SmartLink 56K Voice Modem or Uniwill V.92 Modem is listed. Otherwise, click the Add button to add the modem drive, which is located in the factory CD-ROM (or floppy diskette).

Go to [Start > Settings > Control Panel > System] and click Device Manager button in the Hardware page to check for possible resource or driver conflict. See Windows on-line help or manual for how to handle such problems.

Make sure the phone line, which the computer is connected to, is working.

Connection difficulties -

Be sure to disable Call Waiting on the phone line.

Be sure to have the correct country setting where your computer is used. [Start > Settings > Control Panel > Modem Settings > Configuration] In the Country/Area pull-down menu, select the appropriate country setting.

Excessive line noise might cause the connection to be dropped. To check this, put the regular phone handset on the line and placing a phone call. If you do hear abnormal noise, try to make the modem connection with a different line or contact your local telephony company for service.

Make sure the cable connection is firm.

Try a different receiver number and see if the problem persists.

Network Adapter / Ethernet Problems

The Ethernet adapter does not work -

Go to [Start > Settings > Control Panel > System > Hardware > Device Manager]. Double-click on Network Adapters and check if Realtek RTL8139/810x Family Fast Ethernet NIC (or Realtek RTL8169/8110 Family Gigabit NIC) appears as one of the adapters. If it does not exist, Windows has not detected the Ethernet NIC or the device driver has not been installed properly. If there is a yellow mark or red-cross on the network adapter, it may be a device or resource conflict. Replace or update the device driver from the factory CD-ROM disk or consult Windows manual on how to solve the resource conflict problem.

Make sure the physical connections on both ends of the cable are good.

The hub or concentrator may not be working properly. Check to see if other workstations connected to the same hub or concentrator is working.

The Ethernet adapter does not appear to operate in the 100/1000Mbps transmission mode -

Make sure the hub you are using supports 100/1000Mbps operation.

Make sure that your RJ-45 cable meets the 100/1000Base-TX requirements.

Make sure the Ethernet cable is connected to the hub, socket that supports 100/1000Base-TX mode. The hub may have both 100Base-TX and 1000Base-T sockets.

PC Card / PCMCIA Problems

PC Cards do not function-

Make sure you have properly installed the driver for the card.

Consult the card's manual or contact the vendor for trouble-shooting.

The PC card cannot be recognized -

Windows NT4.0 does not support PCMCIA (PC Card) function. You may need an external program for this.

Make sure the card is fully inserted; the outer end of the card should be even with the edge of the computer.

Remove and insert the PC card again.

Make sure there is no IRQ conflict with the card. See Windows on-line help for solving IRQ conflicts.

Reboot the computer and see if the problem persists.

The card may be defective. Try the card on another system, if possible.

Windows crashes or freezes when you remove the PC card-

Make sure you have <Stop> the PC card before removing it. Double-click the Safely Remove Hardware icon at the lower right corner of the task bar and select the card you wish to stop. When you click <Close>, in few seconds Windows will prompt you to remove the card.

Performance Problems

The computer becomes hot -

In a 35°C environment, the certain areas of the computer's back case are expected to reach 50 degrees.

Make sure the air vents are not blocked.

If the fan does not seem to be working at high temperature (50 degrees Celsius and up), contact the service center.

Certain programs that are processor-intensive may increase the computer temperature to a degree where the computer automatically slows down its CPU clock to protect itself from thermal damage.

The program appears stopped or runs very slowly -

Press CTRL+ALT+DEL to see if an application is still responding.

Restart the computer.

This may be normal for Windows when it is processing other CPU-intensive programs in the background or when the system is accessing slow-speed devices such the floppy disk drive.

You may be running too many applications. Try to close some applications or increase system memory for higher performance.

The processor may have been overheated due to the system's inability to regulate its internal heat. Make sure the computer's ventilation grills are not blocked.

Firewire (IEEE1394) and USB2.0 Problems

The USB device does not work -

Windows NT 4.0 does not support USB protocols

Check the settings in the Windows Control Panel.

Make sure you have installed the necessary device drivers.

Contact the device vendor for additional support.

The IEEE1394 port does not work -

Go to [Start > Settings > Control Panel > System > Hardware > Device Manager]. You should see an entry which reads "Texas Instrument OHCI Compliant IEEE 1394 Host Controllers." If it does not exist, Windows has not detected the host controller or the device driver has not been installed properly. If there is a yellow mark or red-cross on the 1394 host controller, it may be a device or resource conflict. Replace or update the device driver from the factory CD-ROM disk or consult Windows manual on how to solve the resource conflict problem.

Make sure the cable is fully connected.

Make sure you have installed the necessary device drivers.

Contact the device vendor for additional support.

ENG

PRODUCT SPECIFICATION

Processor

Mobile Intel Pentium M (Dothan), up to 2.13GHz, 2 MB L2 cache or
Mobile Intel Celeron M, up to 1.70GHz, 1MB L2 cache

Core Logic

Intel Alviso 915GM + ICH6-M (FW82801FBM) chipset with video, audio, modem, and USB2.0 controllers integrated
533 MHz (Pentium M) / 400 (Celeron M) Front Side Bus
400/533 MHz DDR1 / DDR2 interface

System Memory

DDR1 / DDR2 SDRAM 333/400/533MHz, PC2700 and PC2
3200/4200 compatible
128 / 256 / 512MB, 2.5-Volt (DDR1) or 1.8-Volt (DDR2)
64-bit bus
Two 200-pin DIMM sockets

Display

LCD Panel

15.4-inch WSXGA+ (1680x1050) TFT LCD

Graphic Accelerator

n-Vidia NV43M (GeForce Go 6600)/ATI M26 2D / 3D graphic
engines with 64/128/256 VRAM
Intel Integrated GMA900 Extreme3 graphic engine

Motion Playback

Hardware Motion Compensation and IDCT Supported for
MPEG1/2 Playback

Other Features

Direct3D compatible, DirectX compatible

Audio

Chipset

Intel (ICH6M) integrated audio controller

Audio Codec

Realtek ALC880

Sound Capabilities

DirectSound 3D, EAX 1.0 & 2.0 compatible
A3D, I3DL2 compatible
AC97 V2.3 compatible
7.1 Multi-channel compatible (through S/PDIF)
Supports Azalia standard
2 Stereo Speakers
24

Modem

Chipset

Intel (ICH6M) integrated Modem Controller with MDC card.

Transmission Rate

V.92 / V.90 / K56flex for download data speed up to 56Kbps.
V.34, V.17, V.29 protocol supported

Wireless LAN

Module

Intel PRO/Wireless 2200, MiniPCI Interface

Transmission Protocol

IEEE802.11 B&G

LAN / Ethernet

Chipset

Realtek 8100CL Ethernet function for 10/100Base-TX
network standards or
Realtek 8110SBL Ethernet function for 10/100/1000Base-
TX network standards

PnP Function

Windows 2000 / XP Plug and Play compatible

FlowControl

Automatic Jam and auto-negotiation for flow control

Speed Selection

Auto Negotiation and Parallel detection for automatic
speed selection (IEEE 802.3u)

Other Features

High performance 32-bit PCI bus master architecture with
integrated DMA controller for low CPU and bus utilization
Remote Wake-up Scheme supported
Hot Insertion supported
Remote Wake-up Scheme supported
Hot Insertion supported

Firewire IEEE1394(a)

Chipset

TI TSB43AB22A IEEE1394 OHCI Host Controller and

Capatibilities

Up to 400 Mbps
Expandable up to 63 devices in chains

Storage

Hard Drive

5-ATA or P-ATA 2.5-inch format hard disk (factory option)

Combo Drive

5.25-inch format (12.7mm height) fixed module (Optional Purchase)

DVD±R/±RW or DVD-Dual or DVD-Multi

Standards

5.25-inch format (12.7mm height) fixed module (Optional Purchase)

Keyboard & Touch pad

87-key or 86-key QWERTY keyboard with embedded numeric keypad and Windows keys, 19.05mm Pitch

Built-in Touch Pad

PC Card & Multiple Card Reader

Chipset

T11410 (PC Card), Genesys GL817E (Card Reader)

PC Card

Single Slot TYPE II, Hot insertion and removal supported

4-in-1 Card Reader Format Support

Multimedia Card (MMC), Secure Digital Card (SD), Memory Stick (MS), and MS Pro Card

Ports and Connectors

One Microphone-in jack

One Headphone / SPDIF jack

One Line-in jack

One Firewire (IEEE1394) host connector

Three USB2.0-compliant connectors + One for Built-in for Bluetooth or other USB integrated device

One standard network Ethernet connector (RJ-45)

One modem / phone connector (RJ11)

One S-video (TV-out) output connector

One DC-in connector

One 15-pin VGA connector

One 4-in-1 Card Reader slot

One PC Card Slot (type II)

Battery Pack / AC Adapter

Primary Battery Pack

Li-ion 6-Cell pack, 11.1V x 4400 mAH or

Li-ion 6-Cell pack, 10.8V x 4400 mAH or

Li-ion 9-Cell pack, 10.8V x 6600 mAH

Features

Low battery state with low battery warning beep

Uniwill SmartPower Power Management

Smart Battery Compliant; low battery warning beep

Adapter AC-Input / DC-Output

Autosensing AC-in 100~240V, DC-out 20V, 90W

BIOS

PnP Function

AMI PnP BIOS

Self Test

Power On Self Test

Auto Detection

DRAM auto-detection, auto-sizing

L2 Cache auto-detection

Hard disk type auto-detection

Power Management

APM 1.2 (Advanced Power Management) &

ACPI 2.0 (Advanced Configuration Power Interface)

Security

Two Level Password Protections

Other Features

32bit access, Ultra DMA, PIO5 Mode support

Multi-boot capability

O/S

Compatible with Microsoft Windows 2000 / XP / DOS

Physical Specification

Dimension

358 (W) x 272 (D) x 25.9~34.1 (H) mm

Weight

3.27Kg (with 15.4"LCD, DVD-ROM Drive, and 6-cell battery pack)

Environmental Limits

Operating Temperature: 5 to 30oC (41 to 86oF)

Operating Humidity: 20 to 90 percent RH (5 to 35oC)

Storage Temperature: -15 to 50oC (-5 to 122oF)

AGENCY REGULATORY NOTICES

Federal Communications Commission Notice

This equipment has been tested and found to comply with the limits for a Class B digital device, pursuant to Part 15 of the FCC Rules. These limits are designed to provide reasonable protection against harmful interference in a residential installation. This equipment generates, uses, and can radiate radio frequency energy and, if not installed and used in accordance with the instructions, may cause harmful interference to radio communications. However, there is no guarantee that interference will not occur in a particular installation. If this equipment does cause harmful interference to radio or television reception, which can be determined by turning the equipment off and on, the user is encouraged to try to correct the interference by one or more of the following measures:

Reorient or relocate the receiving antenna.

Increase the separation between the equipment and the receiver.

Connect the equipment into an outlet on a circuit different from that to which the receiver is connected.

Consult the dealer or an experienced radio or television technician for help.

This device complies with Part 15 of the FCC Rules. Operation is subject to the following two conditions: (1) This device may not cause harmful interference, and (2) this device must accept any interference received, including interference that may cause undesired operation.

FCC Caution: Any changes or modifications not expressly approved by the party responsible for compliance could void the user's authority to operate this equipment.

European Notice

Products with the CE Marking comply with both the EMC Directive (89/336/EEC) and the Low Voltage Directive (73/23/EEC) and R&TTE Directive (1999/5/EC) issued by the Commission of the European Community.

Compliance with these directives implies conformity to the following European Norms:

EN55022 : 1998+A1: 2000+A2: 2003, CLASS B

EN61000-3-2 : 2000

EN61000-3-3 : 1995+A1: 2001

EN55024 : 1998+A1 : 2001+A1: 2003

IEC61000-4-2: 2001

IEC61000-4-3:2002+A1:2002

IEC61000-4-4:1995+A1:2000+A2:2001

IEC61000-4-5:2001

IEC61000-4-6:2001

IEC61000-4-8:2001

IEC61000-4-11:2001

EN50082 (IEC801-2, IEC801-3, IEC801-4) Electro-magnetic Immunity

EN 300 328-2, EN 300 328-1, EN 301 489-1, EN 301 489-17 (ETSI 300 328, ETSI 301 489) Electro-magnetic Compatibility and Radio Spectrum Matter.

TBR21 (ETSI TBR21) Terminal Equipment.

EN60950 (IEC950) I.T.E. Product Safety

WEEE Logo Description

ENGLISH

Disposal of Old Electrical & Electronic Equipment (Applicable in the European Union and other European countries with separate collection systems)



This symbol on the product or on its packaging indicates that this product shall not be treated as household waste. Instead it shall be handed over to the applicable collection point for the recycling of electrical and electronic equipment. By ensuring this product is consequences for the environment and human health, which could otherwise be caused by inappropriate waste handling of this product. The recycling of materials will help to conserve natural resources. For more details information about recycling of this product, please contact your local city office, your household waste disposal service or the shop where you purchased the product.

ENG



Notes

ENG

