

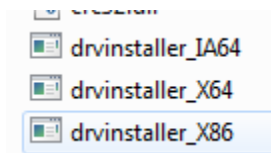
# Installation Manual

Please make sure you backup all data before upgrade.

1. Unpack all files from archive

Name	Date modified	Type
Firmware	2014-05-21 18:08	File folder
Manual	2014-05-21 18:05	File folder
Tools	2014-05-21 18:18	File folder

2. Go to Tools folder and run driver installation file appropriate to you OS



3. Power off the device

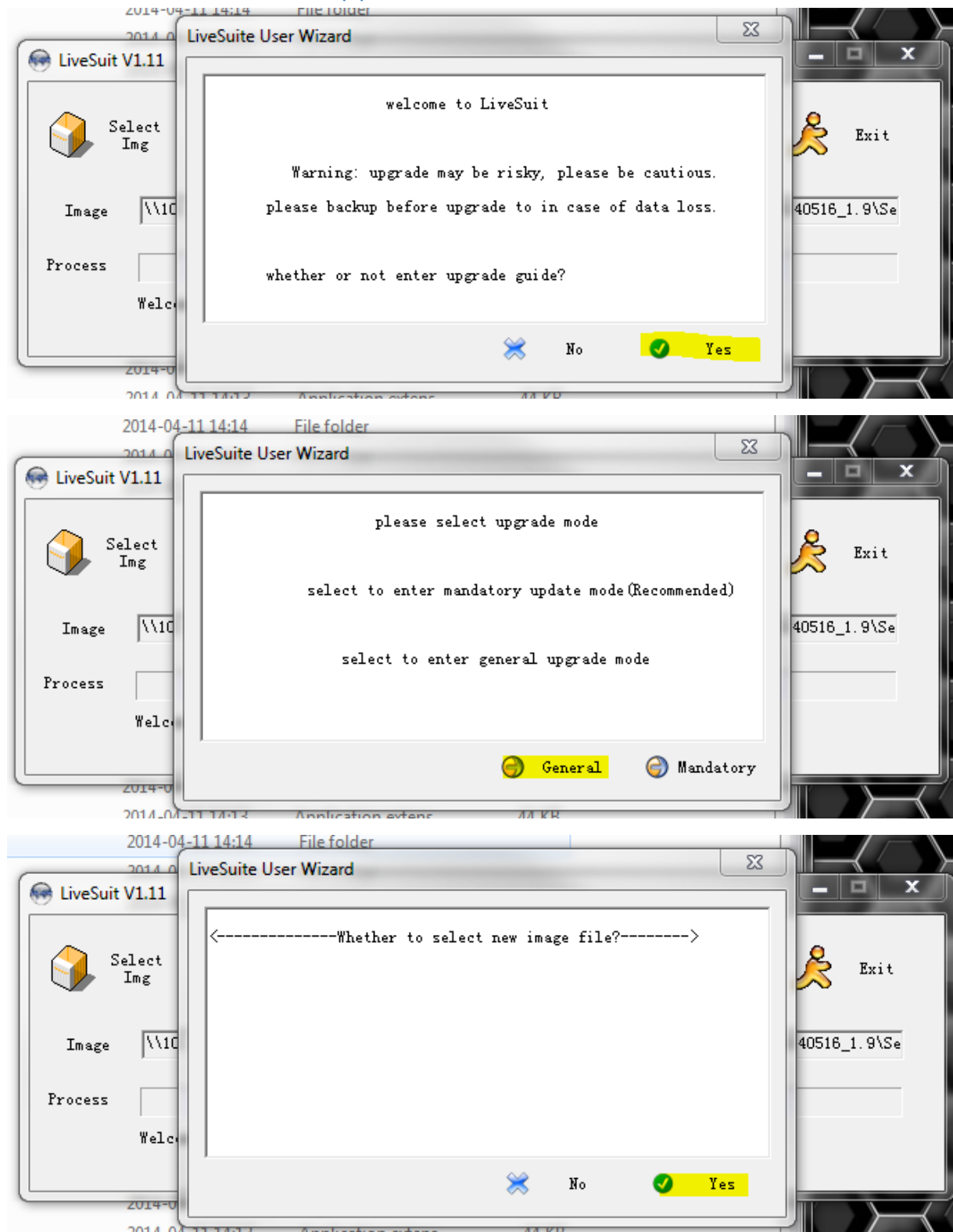
4. Long press and hold Home (left up button) and OK button

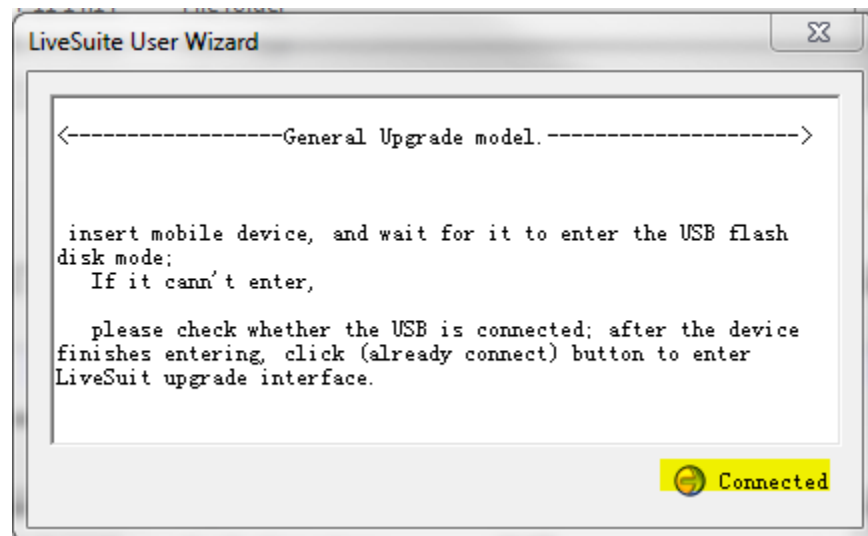
5. During holding both buttons, insert USB cable and continuously press the Power button 8 time (USB driver will be installed automatically). You will see device in the device manager under Universal Serial Bus controllers section



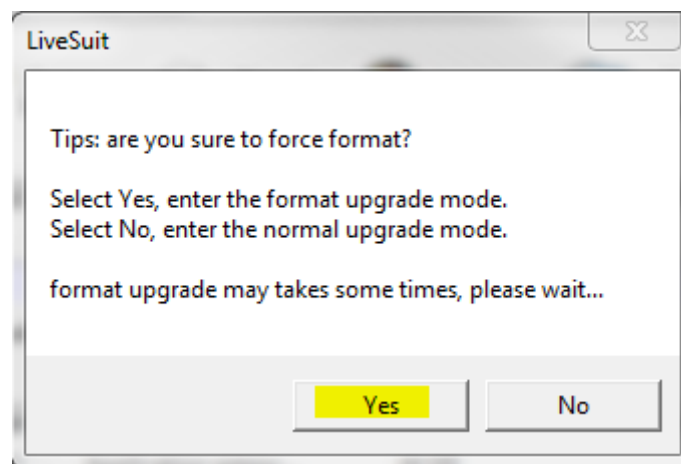
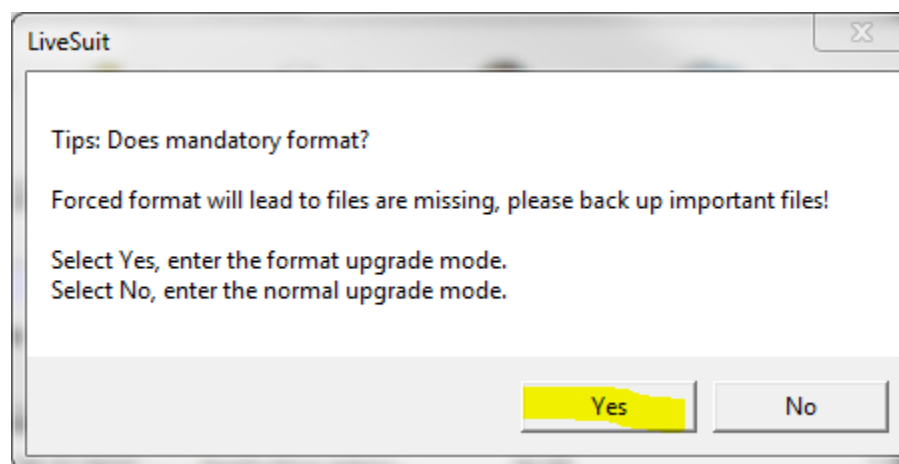
- USB Composite Device
- USB Device(VID\_1f3a\_PID\_efe8)
- USB Mass Storage Device

## 6. Use LiveSuit. Launch application, insert firmware file





7. Press OK if you see any error and perform operation 4 and 5 once more.



8. Wait while upgrade finished.

